



2016

**LEARNING GERMAN
IN GERMANY
AND AUSTRIA**

**GOETHE
INSTITUT**

Sprache. Kultur. Deutschland.

YOUR COMPETENT PARTNER.
AT 14 ATTRACTIVE LOCATIONS



CONTENTS

Our service for you

Lessons, course system, media resource center,
examinations, accommodation, cultural and
leisure-time program

4

Our institutes

Introducing: our 12 course locations in Germany
and our summer course location in Vienna

12

Our course program

INTENSIVE COURSES

40

Intensive courses, examination preparation
(TestDaF, DSH, Goethe-Zertifikat C2)

EVENING/EXTENSIVE COURSES

52

German in the evening

PREMIUM COURSES

54

Intensive and SuperIntensive courses, individual instruction,
small-group courses, company language training

SPECIAL COURSES FOR PROFESSIONALS

64

German for career purposes

YOUNG LEARNERS' PROGRAM

68

Courses for children and teens; German for school classes

Enrollment

Enrollment information

74

Dates and prices in 2016

January to September
October to December

Front cover
Back cover



ONLINE

**YOU CAN BOOK ANY OF OUR COURSES
ONLINE AT**

GOETHE.DE/ANMELDUNG-DEUTSCHLAND

THE GOETHE-INSTITUT. YOUR PARTNER FOR GERMAN

The Goethe-Institut is active around the world as the official cultural institute of the Federal Republic of Germany. We promote knowledge of the German language and foster international cultural cooperation. By providing information on Germany's cultural, social and political life, we convey a comprehensive picture of Germany.

Expertise in German

The Goethe-Institut has more than 60 years' experience in teaching German as a foreign language, teacher training and the development of curricula, examinations and course materials.

A global network

There are 153 Goethe-Instituts in 96 countries, 12 Goethe-Instituts in Germany and more than 800 cooperative partners around the world. The courses in Germany and abroad are closely coordinated, and complemented by distance learning programs and examinations.

Further information on the Goethe-Institut can be found at [goethe.de](https://www.goethe.de)



WELCOME. **TO THE GOETHE-INSTITUT IN GERMANY**

Learning German at the Goethe-Instituts in Germany is more than just a language course: It's an opportunity for you to discover a country and its culture, get to know the people and their everyday lives, and experience something new. In short: It is an excellent idea.

German for the career world, your studies or just for general interest

At the Goethe-Institut you're always in good hands – whether you need to learn German for your work or in preparation for university studies or just want to speak German for the fun of it. Our institute teams are there to provide you with service and support whenever questions arise.

Language instruction from every angle

We want your language-learning stay in Germany to be as successful as possible – and for you to feel at home as our guest. That's why every one of our language courses includes: individual placement in courses and ongoing consultation on your learning approach, support with examination preparation, the chance to take an exam and to acquire a Goethe Certificate, multimedia self-learning opportunities in the media resource center and an exciting cultural and leisure program – so that you really get to know Germany.

State-of-the-art equipment

Our institutes are equipped with the latest learning and presentation technologies, including WLAN, PCs, LCD projectors and interactive whiteboards.



OUR CLASSES.

LEARNING THE FUN WAY

You'll be learning in international groups, speaking German right from the first lesson. And in your everyday activities and leisure hours, you'll have the opportunity to put what you've learned into practice. This ensures that you will learn effectively – while having fun.

Plenty of variety

Our committed and professional teaching staff keep the lessons stimulating with a wide variety of practice techniques: in the classroom, while exploring the city and in course projects. With your classmates from all over the world you'll develop your communication skills – and you'll get to know Germany better: politics, society, culture and everyday life. We'll help you to achieve your learning goals, thus ensuring that your German course is an intensive and successful language-learning experience in Germany.

Recognized exams and certificates

At the end of your course we will present you with a certificate. You can also take a Goethe-Institut examination. Of course we'll provide you with individual advice and support as you prepare. Your Goethe certificate is a record of your course for career or study purposes that is recognized around the world (see back cover).

You can check the exam dates at Goethe-Instituts in Germany at goethe.de/pruefungen-deutschland



OUR COURSE SYSTEM. SYSTEMATIC AND FLEXIBLE

Our modular course system, with two-week, four-week and eight-week units, allows you to decide whether to learn for a short period – or combine any desired number of courses for a complete and systematically structured language-learning program.

Year-round course program at all levels

Our Intensive 4, Intensive 8 and SuperIntensive 2 courses are offered all year round. They are available at all levels, with each course building on the contents of the previous one. The contents of these courses are based on detailed curricula derived from the levels defined in the Common European Reference Framework for Languages (see inside back cover).

Learn German – anywhere and anytime

Our courses and our exams are fully coordinated, so that you can pick up where you left off at any time and at any other Goethe-Institut in Germany or your home country. Or you can enhance your skills with one of our distance learning courses.

College credits

Would you like to get college credit for your German course or have your exam grade recognized? Ask your college or university, or benefit from our special agreement with Millersville University. millersville.edu/goethecredit

GERMAN LEARNERS ON FACEBOOK

Our Facebook page for German learners already has more than 500,000 friends from around the world. Have a look! You'll find lots of interesting tips and information about Germany and the German language. goethe.de/facebook-deutschlernen



THE MEDIA RESOURCE CENTER. LEARN GERMAN YOUR WAY

Welcome to our media resource centers – the Goethe-Institut individual learning centers*. This is where you can learn independently, using multimedia resources – at your own pace and as much as you want.

All kinds of media

The media resource centers have internet access to help with your research. You'll also find:

- textbooks and practice materials
- sample tests and materials for examination preparation
- learning software
- reference works
- information on Germany and your course location
- newspapers, magazines and literature
- films

Expert advice

Your teachers and the staff of the media resource center are on hand to provide knowledgeable support. We're always glad to help with the selection and use of suitable materials and media.

* We regret that a media resource center is not available at the Heidelberg and Vienna summer course locations at present.



EXAMINATIONS AND CERTIFICATES. SHOW WHAT YOU CAN DO

Whatever your reasons for learning German – as a professional qualification, as preparation for university studies in Germany or just to have recognized proof of your language level – we offer a certification system with exams at all levels.

European standards

The Goethe-Institut German courses are based on the EU Council reference levels, which define the language skill level that you will have reached on completing a given course level. By passing the examination for your course, you obtain certification that you have achieved a certain level in German.

Recognized around the world

The Goethe-Institut examinations and certificates meet the standards of ALTE – the Association of Language Testers in Europe. They are developed by qualified experts, tested and reviewed, and are implemented and graded uniformly around the world. This has earned our examinations and certificates a world-wide reputation and the respect of educational institutions and corporations in many countries.

If you have questions on the examinations and preparatory courses, contact the responsible Goethe-Institut directly or visit- goethe.de/pruefungen-deutschland



CULTURAL AND LEISURE PROGRAM.

DISCOVER GERMANY

Learning a new language is a very good thing. But getting to know the country at the same time is even better. That's why we offer you more than just a language course. Complementing it is an exciting and varied cultural and leisure-time program. You and your classmates will discover the host city together, taking part in cultural events and sports, as well as simply relaxing and enjoying city life.

An experience - every time

- daytrips and weekend excursions
- city walking tours and guided tours
- visits to museums and exhibitions
- theater performances, concerts and opera
- company and university tours
- film nights at the institute
- sports programs
- parties, social encounters and pub nights

We offer some excursions and events on an at-cost basis. Your only expenses will be the train fares, admission prices, etc.



ACCOMMODATION AND MEALS.

MAKE YOURSELF AT HOME

We know how important it is to feel at home when learning a foreign language in new surroundings. Consequently, you can book accommodation through all institutes in Germany.

Accommodation – as you like it

We offer single or double rooms at our guesthouses, in student hostels or in homestay arrangements.

The Goethe-Institut guesthouses have basic furnishings and facilities:

- ☐ rooms with WC/shower or
- ☐ rooms with WC/showers on the same floor
- ☐ shared kitchens for self-catering
- ☐ television room
- ☐ washing machines
- ☐ internet/WLAN
- ☐ bed linen and towels are provided.

Furnishings and facilities may vary in student hostels and home-stay arrangements. Please check the web pages of the institute you will be attending.

At most locations we can offer shared or one-room apartments. We will also be happy to recommend a hotel if you wish (prices available on request). Just let us know your preferences when you book your course. The earlier you book, the better the chances that we will find the accommodation of your choice.

For information on accommodation options and prices, see goethe.de/unterkunft

Meals

Breakfast can be booked in Dresden, Göttingen and Schwäbisch Hall. Lunch can be booked in Göttingen and Schwäbisch Hall.

At the start of your course we will also give you detailed information on university dining facilities, affordable restaurants and food stores near your institute.



GOETHE-INSTITUTS IN GERMANY

YOUR COMPETENT PARTNER.
AT 14 ATTRACTIVE LOCATIONS



BERLIN



Berlin is the capital of the Federal Republic of Germany and the largest continental European metropolis between Paris and Moscow. The 19th-century writer Jean Paul said, “Berlin is more a part of the world than a city.” Today this description is more apt than ever before: Berlin is not only the political center of Germany. It is also a magnet for avant-garde culture, an experimental space for urban lifestyles and a hotbed of exciting subcultures.

Every neighborhood exudes its own fascination with an unmistakable character and a wealth of history. Berlin’s nightlife never stops, and there is no end to the flow of new ideas generated in the arts, cultural life and club scene. The city is home to four universities and four art academies. Since German reunification and the fall of the Berlin Wall, the new capital has attracted steadily increasing numbers of media outlets and companies in future technology sectors.

Goethe-Institut Berlin is situated in the Berlin Mitte district, near Hackesche Höfe, the thriving cluster of courtyards bordered by offices, apartments, galleries, workshops, cafés and shopping, intermeshing the worlds of work, the arts, living, culture, dining and entertainment. The Weinmeisterstrasse underground train station is right outside the door of the institute, and the Hackescher Markt S-Bahn station is a four-minute walk.

COURSES IN BERLIN	PRICE (IN EUROS)	PAGE
Intensive 4 (afternoons)	From 1,095	42
Intensive 8	From 2,190	43
Intensive 2 - Language and Culture	795	47
German in the evening	From 619	53
Other evening/extensive courses	Please enquire	53
Individual and small-group courses	Please enquire	60
Company language training	Please enquire	62
German Communication Training for Doctors	Please enquire	67
German for school classes	615	72

EXAMINATIONS

The Goethe-Institut Berlin is an examination center. The available examinations include the TestDaF exam and the BULATS (Deutsch-Test für den Beruf).

ACCOMMODATION

Homestay arrangements, apartments, hotels



CONTACT

Goethe-Institut
Neue Schönhauser Str. 20
10178 Berlin

Telephone: +49 30 25906-3
Fax: +49 30 25906-400
berlin@goethe.de

AIRPORT

Berlin



The former West German capital is in the south of the state of North-Rhine Westphalia. In its new identity, Bonn is now the *UN city on the Rhine*. The office complex that once housed Germany's parliamentarians is now home to 11 UN organisations.

The house where Ludwig van Beethoven was born in Bonn in 1770 is just one of the city's many museums. The composer is also celebrated in the name of the annual music festival here. The University of Bonn is one of the largest and most prestigious in Germany. The students and the many tourists from Germany and abroad enjoy the lively theater scene, the Bonn Summer Festival and the delightful atmosphere at its open air concerts, and naturally the boisterous fun of the Carnival season. A boat trip on the Rhine is a wonderful way to see the Rhine valley, a world cultural heritage site, with its many castles and hillside vineyards, and the famous Loreley.

The **Goethe-Institut Bonn** is centrally located in the modern building of the Language Learning Center at the University of Bonn. This gives students first-hand experience of university life in Germany.

The institute is fully accessible to the disabled.

COURSES IN BONN	PRICE (IN EUROS)	PAGE
Intensive 4	From 1,095	42
Intensive 2	625	45
German in the evening	From 550	53
Other evening/extensive courses	Please enquire	53
Individual and small-group courses	Please enquire	60
Company language training	Please enquire	62
German for lawyers	1,455	66
German Communication Training for Doctors	540	67
German for school classes	615	72

EXAMINATIONS

The Goethe-Institut Bonn is an examination center.
The available examinations include the TestDaF exam and the BULATS (Deutsch-Test für den Beruf).

ACCOMMODATION

The institute’s own guesthouses, shared apartments, homestay arrangements, apartments, hotels



CONTACT

Goethe-Institut
Lennéstr. 6
53113 Bonn

Telephone: +49 228 95756-0
Fax: +49 228 95756-23
bonn@goethe.de

AIRPORTS

Cologne/Bonn, Düsseldorf, Frankfurt/M.

BREMEN



The “Free Hanseatic City of Bremen” is Germany’s smallest federal state and its 10th-largest city. The people of Bremen are fond of saying, “Hamburg is the gateway to the world, but Bremen holds the key.” Probably the world’s oldest statue emblematic of liberty, dating back to 1404, can be seen on the marketplace: the Roland Statue. In recent years this traditional overseas trading and shipbuilding city has become an important center for aerospace engineering and the sciences. The Technology Park near the University of Bremen has gained wide renown.

But Bremen has many other claims to fame, such as the medieval city center, the Hanseatic brickwork architecture, and the fairy-tale animals from Grimms’ ‘Town Musicians of Bremen’. In 2004 the imposing Bremen city hall and the Roland Statue were designated as UNESCO World Cultural Heritage sites.

The **Goethe-Institut Bremen** is situated on the university campus. This makes it convenient for participants to combine their German course with life at the university. The university is just a 14-minute trip from the main train station with the number 6 tram line.

COURSES IN BREMEN	PRICE (IN EUROS)	PAGE
Intensive 4	From 1,095	42
TestDaF exam preparation	1,095	44
Individual and small-group courses	Please enquire	60
Company language training	Please enquire	62
German Communication Training for Doctors	1,080	67

EXAMINATIONS

The Goethe-Institut Bremen is an examination center.
The available exams include the TestDaF exam and the BULATS (Deutsch-Test für den Beruf).

ACCOMMODATION

Shared apartments, homestay arrangements, apartments, hotels



CONTACT

Goethe-Institut
University of Bremen
Bibliothekstr. 3
28359 Bremen

Telephone: +49 421 36081-0
Fax: +49 421 325242
bremen@goethe.de

AIRPORTS

Bremen, Hamburg

DRESDEN



Splendid baroque architecture, numerous artistic treasures and the enchanting surrounding countryside have earned the capital of the Free State of Saxony the nickname *Florence on the Elbe*. A prominent university city, it has one of Germany's largest libraries, and also boasts a lively contemporary literary scene. It was here in 1785 that Friedrich Schiller wrote his *Ode to Joy*, the poem Beethoven set to music in his Ninth Symphony. Dresden is also the center of eastern Germany's most prosperous economic region, often referred to as *Silicon Saxony*. Complementing the urban appeal of Dresden are the endless possibilities for recreation and entertainment – day and night.

The **Goethe-Institut Dresden** is situated in the historical Dresdner Neustadt area of the city, near the Elbe and the baroque city center. The spacious grounds of the institute include a small park with mature trees. The institute and its guesthouse are easily accessible by public transportation.

COURSES IN DRESDEN	PRICE (IN EUROS)	PAGE
Intensive 4	From 1,095	42
Intensive 2	625	45
Intensive 2 – Language and Culture	795	47
Individual and small-group courses	Please enquire	60
Company language training	Please enquire	62
German Communication Training for Doctors	540	67
German for school classes	615	72

EXAMINATIONS

The Goethe-Institut Dresden is an examination center.
The available exams include the TestDaF exam and the BULATS (Deutsch-Test für den Beruf).

ACCOMMODATION

The institute’s own guesthouses, shared apartments,
homestay arrangements, apartments, hotels



CONTACT

Goethe-Institut
Königsbrücker Str. 84
01099 Dresden

Telephone: +49 351 80011-0
Fax: +49 351 80011-10
dresden@goethe.de

AIRPORTS

Dresden, Berlin

DÜSSELDORF



Düsseldorf, the metropolis on the Rhine, is the largest city in the state of North-Rhine Westphalia. As a hub of international business activity and a major trade fair center, Düsseldorf comes across as worldly and easygoing. Some 5,000 companies from around the world have offices here, lending a cosmopolitan touch to the populace. The advertising, design and fashion sectors here generate higher sales than in any other German location. *Neuer Zollhof*, a postmodern ensemble of buildings designed by Frank Gehry, embodies the city's creativity and identity.

The most famous native son of Düsseldorf is definitely the poet Heinrich Heine, whose name is commemorated by the respected university here. With the artist Josef Beuys, the academy of fine arts also gained worldwide renown. Since 1976 the *Düsseldorfer Photoschule*, headed by Bernd and Hilla Becher, has been producing Germany's most famous photographers, including Andreas Gursky, Thomas Ruff and Candida Höfer.

The **Goethe-Institut Düsseldorf** is located in a modern building right at the railway station near the Konrad-Adenauer-Platz exit. This is also an ideal starting point for our course participants to visit destinations all over the Rhine-Ruhr region.

COURSES IN DÜSSELDORF	PRICE (IN EUROS)	PAGE
Intensive 4	From 1,095	42
Intensive 2	625	45
German in the evening	From 550	53
Courses for individuals and small groups	Please enquire	60
Company language training	Please enquire	62
German Communication Training for Doctors	540	67
German for school classes	615	72

EXAMINATIONS

The Goethe-Institut Düsseldorf is an examination center.
The available exams include the TestDaF exam and the BULATS (Deutsch-Test für den Beruf).

ACCOMMODATION

Homestay arrangements, apartments, hotels



CONTACT

Goethe-Institut
Immermannstr. 65 B
40210 Düsseldorf

Telephone: +49 211 99299-0
Fax: +49 211 771084
duesseldorf@goethe.de

AIRPORT

Düsseldorf

FRANKFURT AM MAIN



Frankfurt, the site of the world-famous Frankfurt Book Fair, has a long tradition of forging strong links between capital and the arts. The city is home to 190 publishing houses. Among the superlatives setting Frankfurt apart are its airport, which is one of the world's largest, the Frankfurt Stock Exchange and the city's dramatic, modern skyline, unrivalled in Germany.

Johann Wolfgang von Goethe, without doubt the most famous resident, is simply everywhere. The house where he was born, now beautifully restored, is in Grosser Hirschgraben in the historic city center. Whether you like concerts, movies, theater or exhibitions: Frankfurt has a rich cultural life. A visit to the "Museum Mile", for example, with the film and architecture museum, the Museum of Applied Arts, the Jewish Museum and the world-famous *Städel* art gallery, can be combined with a walk along the River Main and a stop at an inn serving the renowned local apple wine.

The **Goethe-Institut Frankfurt** is situated near the Museum Mile, opposite the Südbahnhof railway station in the attractive Sachsenhausen district, a popular residential area with plenty to do in the evening. There are excellent public transportation links to get you from the institute to the city center.

COURSES IN FRANKFURT	PRICE (IN EUROS)	PAGE
German in the morning	Please enquire	
German in the evening	From 619	53
Other evening/extensive courses	Please enquire	53
PREMIUM SuperIntensive 2	From 1,625	56
PREMIUM SuperIntensive 1	From 895	58
PREMIUM Intensive 4 plus	From 1,725	59
Courses for individuals and small groups	Please enquire	60
Company language training	Please enquire	62
German Communication Training for Doctors	Please enquire	67
German for school classes	615	72

EXAMINATIONS

The Goethe-Institut Frankfurt is an examination center. The available exams include the TestDaF exam and the BULATS (Deutsch-Test für den Beruf).

ACCOMMODATION

Homestay arrangements, apartments, hotels



CONTACT

Goethe-Institut
Diesterwegplatz 72
60594 Frankfurt/Main

Telephone: +49 69 961227-0
Fax: +49 69 9620395
frankfurt@goethe.de

AIRPORT

Frankfurt/Main

FREIBURG



There seems to be no end to the good fortune of Germany's most southerly major city: An enchanting location between the Black Forest and the Rhine, with France and Switzerland on the doorstep, and an enviable climate – Freiburg has it all. Other major factors in the excellent quality of life here are the historical city center with its secluded squares, the musical culture and the vineyards on the slopes of the Kaiserstuhl. The little metropolis also has a big cultural program: eight municipal theaters, cinemas, libraries, numerous museums and galleries compete for an audience. The famous college of music, the “Fest der Innenhöfe” (a musical festival staged in courtyards around the city) and the Zelt-Musik-Festival, which presents more than 100 highly diverse concerts over 19 days, fill Freiburg with beautiful sounds.

But Freiburg is more than just romantic. The University of Freiburg – designated a University of Excellence – has 28,000 students. Famed as the *green capital*, the city is also a trailblazer for ecology and renewable energy.

The **Goethe-Institut Freiburg** is surrounded by a spacious garden. It is just five minutes from the railway station, the city center with the university and its dining hall, and the *Stühlinger* student district, where the institute's guesthouse is located.

COURSES IN FREIBURG	PRICE (IN EUROS)	PAGE
Intensive 4	From 1,095	42
Intensive 8	2,190	43
Individual and small-group courses	Please enquire	60
Company language training	Please enquire	62
German for the Career World – Intensive	1,095	66
Medicine. Proficiency. German.	2,900	66
German Communication Training for Doctors	Please enquire	67
German for school classes	615	72

EXAMINATIONS

The Goethe-Institut Freiburg is an examination center. The available exams include the TestDaF exam and the BULATS (Deutsch-Test für den Beruf).

ACCOMMODATION

The institute’s own guesthouses, homestay arrangements, apartments, hotels



CONTACT

Goethe-Institut
Wilhelmstr. 17
79098 Freiburg

Telephone: +49 761 38671-0
Fax: +49 761 38671-15
freiburg@goethe.de

AIRPORTS

Basel / Mulhouse, Stuttgart, Frankfurt / Main, Zurich

GÖTTINGEN



The historical center of this 1000-year-old city in the heart of Germany is a delight for visitors, with its beautiful churches, lovingly preserved half-timbered houses forming picturesque squares, and old city walls. In 2007 the Georg-August-Universität, founded in 1737, was designated a University of Excellence. Students, who make up a quarter of the city's population, give Göttingen its young and easygoing atmosphere, with the numerous student pubs and exciting cultural scene.

More than 40 Nobel laureates have lived and worked in Göttingen over the past 100 years. Several Max Planck research institutes and the German Aerospace Center have headquarters here, carrying on Göttingen's long tradition as a research center. It is also the home of one of Germany's largest scientific libraries and internationally renowned companies in future technology sectors.

The **Goethe-Institut Göttingen** is housed along with its guesthouse in a splendid historical villa with spacious grounds. It is just 10 minutes on foot from the old city center and the university campus.

COURSES IN GÖTTINGEN	PRICE (IN EUROS)	PAGE
Intensive 4	From 1,095	42
Intensive 2	625	45
TestDaF exam preparation	1,095	44
Goethe-Zertifikat C2 exam preparation	1,095	44
Individual and small-group courses	Please enquire	60
Company language training	Please enquire	62
German Communication Training for Doctors	540	67
German for school classes	615	72

EXAMINATIONS

The Goethe-Institut Göttingen is an examination center. The available exams include the TestDaF exam and the BULATS (Deutsch-Test für den Beruf).

ACCOMMODATION

The institute's own guesthouses, shared and individual apartments, hotels



CONTACT

Goethe-Institut
Merkelstr. 4
37085 Göttingen

Telephone: +49 551 54744-0
Fax: +49 551 54744-44
goettingen@goethe.de

AIRPORTS

Hanover, Frankfurt/Main

HAMBURG



Hamburg is Germany's second-largest city and also has the status of one of Germany's 16 states. An economic powerhouse, it is situated along the lower reaches of the Elbe, approximately 100 kilometers inland from the North Sea. The people here are legendary for their openness to the outside world, their public spirit and their dry sense of humor. Europe's second-biggest port has earned Hamburg the nickname, *Gateway to the world*.

More than 1,800 companies engaged in foreign trade are active in the city. *HafenCity*, a major urban development project, underscores Hamburg's status as a metropolis of the future. At the same time, Hamburg is regarded as a leading media and press center. With some 600 music clubs, publishers and production companies, the music and entertainment industry boasts the right infrastructure here to keep the tunes coming – as the Beatles realized back in the 1960s.

The **Goethe-Institut Hamburg** is at the heart of the city not far from the Binnenalster lake and the gallery/museum district known as the Kunstmeile, or 'Art Mile'. It occupies the top two floors of an imposing 19th-century building. The central location at the main train station ensures optimal transportation links.

COURSES IN HAMBURG	PRICE (IN EUROS)	PAGE
Intensive 4	From 1,095	42
Intensive 2	625	45
German in the evening	From 550	53
Individual and small-group courses	Please enquire	60
German language training	Please enquire	62
German Communication Training for Doctors	Please enquire	67
German for school classes	615	72

EXAMINATIONS

The Goethe-Institut Hamburg is an examination center. The available exams include the TestDaF exam and the BULATS (Deutsch-Test für den Beruf).

ACCOMMODATION

The institute's own guesthouses, homestay arrangements, apartments, hotels



CONTACT

Goethe-Institut
Hühnerposten 1
20097 Hamburg

Telephone: +49 40 238543-0
Fax: +49 40 238543-99
hamburg@goethe.de

AIRPORT

Hamburg

MANNHEIM



Mannheim is a lively university city offering excellent quality of life. It is located at the center of the Rhine-Neckar triangle, where 2 million people live and work – including 320,000 in Mannheim. The fostering of trade, manufacturing, research and culture has a long tradition in this city, once the residence of the ruling Wittelsbach family.

Today Mannheim enjoys a reputation as a *focal point for German language and studies*, a fact exemplified by the presence here of the Bibliographisches Institut (whose Dudenverlag publishing arm publishes authoritative dictionaries and style guides) and the Institut für Deutsche Sprache. The Mannheim Palace is second only to Versailles among Europe's largest baroque castles. A unique aspect of the city is the classical layout of the streets in numbered blocks. And those with a longing for the charm of winding medieval laneways can take a tram to neighboring Heidelberg.

The **Goethe-Institut Mannheim** and its guesthouses are situated in the leafy district of Lindenhof near the Rhine. The main train station and the shopping area in the city center are just 10 minutes away.

Heidelberg Summer Course location: The language course will take place in the Chester Conference Center. Your accommodation will be right next door in the four-star Chester Hotel, with comfortable double rooms assigned for individual use.

COURSES IN MANNHEIM	PRICE (IN EUROS)	PAGE
Intensive 4	From 1,095	42
Intensive 2	625	45
DSH exam preparation	From 1,095	44
Summer course in Heidelberg	1,695	48
German in the evening	From 550	53
Other evening/extensive courses	Please enquire	53
Individual and small-group courses	Please enquire	60
Company language training	Please enquire	62
German Communication Training for Doctors	1,080	67
German for school classes	615	72

EXAMINATIONS

The Goethe-Institut Mannheim is an examination center.
The available exams include the TestDaF and DSH exams as well as the BULATS (Deutsch-Test für den Beruf).

ACCOMMODATION

student hostel, apartments, hotels



CONTACT

Goethe-Institut
Neckarauer Str. 194
68199 Mannheim

Telephone: +49 621 83385-0
Fax: +49 621 83385-55
mannheim@goethe.de

AIRPORT

Frankfurt/Main

MÜNCHEN



The Bavarian capital is Germany's third-largest city. There is probably no city of comparable size anywhere that is similarly charming, mellow and safe. You can walk along the Isar river, passing through the entire city, surrounded at all times by trees and gardens. The sights, from the famed Deutsches Museum of science and technology to Nymphenburg Castle, attract millions of tourists every year. Equally delightful is the city's location in the Alpine foothills, amid mountains, lakes and castles.

With two elite universities, Munich has an excellent standing in the academic world. Shaping the character of today's Munich are a number of key industries: cars, insurance, IT and media, trade fairs and tourism. In addition, with 250 book publishers, the city is second only to New York in the publishing world. Since the 1990s Munich has also played a trendsetting role in the design and advertising sectors.

The **Goethe-Institut Munich** is conveniently located in the city center, close to cafés, restaurants and many of the city's sights. The modern guesthouse in the Nymphenburg neighborhood is within very easy reach by public transportation.

COURSES IN MUNICH	PRICE (IN EUROS)	PAGE
Intensive 4	From 1,095	42
Intensive 2 - Language and Culture	795	47
TestDaF exam preparation	1,095	44
Goethe-Zertifikat C2 exam preparation	1,095	44
German in the evening	From 619	53
Other evening/extensive courses	Please enquire	53
PREMIUM SuperIntensive 2	From 1,625	56
PREMIUM SuperIntensive 1	From 895	58
Courses for individuals and small groups	Please enquire	60
Company language training	Please enquire	62
German Communication Training for Doctors	Please enquire	67
German for school classes	615	72

EXAMINATIONS

The Goethe-Institut Munich is an examination center. The available exams include the TestDaF exam and the BULATS (Deutsch-Test für den Beruf).

ACCOMMODATION

Goethe guesthouse, homestay arrangements, hotels



CONTACT

Goethe-Institut
Sonnenstr. 25
80331 München

Telephone: +49 89 551903-0
Fax: +49 89 551903-35
muenchen@goethe.de

AIRPORT

Munich

SCHWÄBISCH HALL



Schwäbisch Hall brings history to life: The historical center of this 1000-year-old former Free Imperial City is replete with half-timbered houses from the late Middle Ages. An intimate, relaxed atmosphere is enhanced by the wide-ranging pedestrian precinct and the many welcoming restaurants and pubs. This is a place where people can learn, work and live with no pressure.

Schwäbisch Hall is the most important regional hub between Stuttgart and Nuremberg. Key factors in the local economy of the town, which has a population of 37,000, are the insurance industry, mechanical engineering and trade. Kunsthalle Würth, an art gallery designed by the Danish architect Henning Larsen, has a reputation extending far beyond this region. At the town's two colleges, Goethe-Institut course participants are welcome to listen in on lectures and seminars at all times.

The **Goethe-Institut Schwäbisch Hall** is centrally located in the town's romantic city center. It is housed in a spacious historical building with modern rooms and facilities, with the guesthouses nearby.

COURSES IN SCHWÄBISCH HALL	PRICE (IN EUROS)	PAGE
Intensive 4	From 1,095	42
Intensive 2	625	45
Intensive 2 – Language and Culture	795	47
Deutsch 50 plus	775	50
Other evening/extensive courses	Please enquire	53
Individual and small-group courses	Please enquire	60
Company language training	Please enquire	62
German and Internship	1,655	66
German Communication Training for Doctors	Please enquire	67
German for school classes	615	72

EXAMINATIONS

The Goethe-Institut Schwäbisch Hall is an examination center. The available exams include the TestDaf exam and the BULATS (Deutsch-Test für den Beruf).

ACCOMMODATION

The institute’s own guesthouses, shared apartments, homestay arrangements, apartments, hotels



CONTACT

Goethe-Institut
Am Spitalbach 8
74523 Schwäbisch Hall

Telephone: +49 791 97887-0
Fax: +49 791 97887-77
schwaebisch-hall@goethe.de

AIRPORTS

Frankfurt/Main, Stuttgart



The Austrian capital is at the heart of Europe. Of the city's 1.8 million inhabitants, more than 170,000 are students. Vienna is one of the most important centers of higher education in the German-speaking world, and the University of Vienna – founded in 1365 – is among the oldest in Europe.

Culture is everywhere in Vienna. The city center has been declared a World Cultural Heritage Site by UNESCO, and is graced with splendid architecture such as St. Stephen's Cathedral, the Burgtheater and the Hofburg, with the Spanish Riding School and the National Library. Vienna is regarded as a leading center for music. Many influential composers, including W. A. Mozart, Joseph Haydn, Franz Schubert and Johann Strauss, lived and worked here. Along with its many traditional coffee houses, Vienna has a vibrant club scene, many live entertainment venues and trendy bars noted for their innovative decor. The 7th district is renowned for numerous outstanding shops and boutiques, including those of Vienna designers.

For the “Intensive 2 – Language and Culture” summer course, we are guests, as the Goethe-Institut Vienna, of the Instituto Cervantes, just steps from the Vienna Opera and the city's world-renowned museum district.

COURSES IN VIENNA

PRICE (IN EUROS)

PAGE

Intensive 2 – Language and Culture	795	47
------------------------------------	-----	----

EXAMINATIONS

Please enquire

ACCOMMODATION

Homestay arrangements, guesthouse, hotels



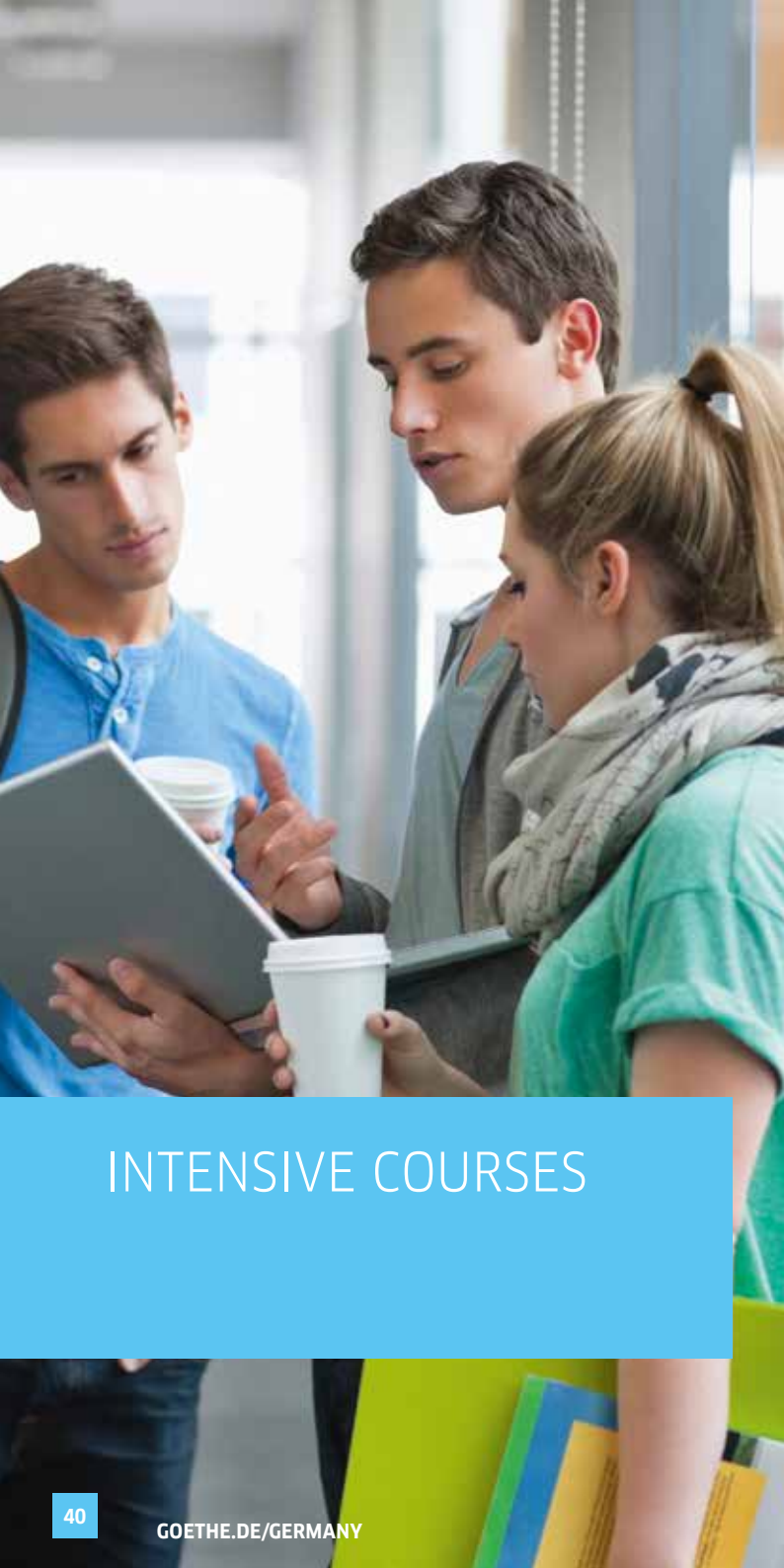
CONTACT

Goethe-Institut Kundenmanagement
Goethestraße 20
80336 München
Germany

Telephone: +49 89 15921-200
Fax: +49 89 15921-202
E-mail: deutsch@goethe.de

AIRPORT

Vienna



INTENSIVE COURSES

OUR INTENSIVE COURSES. LEARN MORE – IN LESS TIME

The intensive course program focuses fully on your success as a learner. This is ideal if you need German for your studies, your everyday working life or your personal future. And what's more: you won't just be learning German intensively – you'll also get to know Germany and its people in their everyday lives as they live, work and enjoy themselves.

- Right from the very first lesson you'll be taught exclusively in German in a group with a maximum of 16 participants.
- All course materials are included.
- The Intensive 8, Intensive 4 and Intensive 2 courses generally include 25 units of instruction (UI) per week, each lasting 45 minutes.
- You'll have lessons from Monday to Friday, either mornings or afternoons.
- The Intensive 8 and Intensive 4 courses run continually all year round, and the Intensive 2 takes place at a number of different scheduled dates.
- You can combine the Intensive 8 and Intensive 4 courses for an extensive language-learning stay.

Please note: There are no lessons on the arrival and departure dates, during the Christmas period or on public holidays.

In all courses* you'll have access to the media resource center for individual practice and study. And when you take a break from your studies you can join your classmates in our exciting cultural and leisure-time program.

After successfully completing your course you can take part in a course that continues where the first one left off – either at one of our institutes in Germany or at a Goethe-Institut in your home country. You can also take one of our examinations, which are recognized around the world.

* We regret that a media resource center is not available at the Heidelberg and Vienna summer course locations at present.

INTENSIVE 4

approx. four weeks 17 days of lessons	Berlin ¹ Bonn ²	Göttingen ² Hamburg ^{2, 7, 8}
85 UI, approx. 25 UI per week	Bremen ² Dresden ²	Mannheim ² Munich ²
max. class size: 16	Düsseldorf ² Freiburg ²	Schwäbisch Hall
From €1,095		

You'll learn in a group for approx. four weeks, either in a morning or afternoon course, depending on the institute you choose and the course level. There are 12 possible starting dates spread over the entire year.

This will enable you to develop your language skills and combine any number of courses to create a systematic language-learning program. At the start of your course we will ask you about your individual learning goals and follow up with ongoing support during the learning process. This results in tight integration of the classroom lessons, self-study activities and practice.

At all levels you also have the option of taking one of our examinations, which are recognized around the world.

Services

- ☐ intensive language training from Monday to Friday
- ☐ all levels
- ☐ placement test before the beginning of the course
- ☐ ongoing evaluation of progress and systematic advice on your individual learning path
- ☐ participation certificate
- ☐ opportunity to take an examination at the end of the course
- ☐ all course materials
- ☐ self-directed learning in the media resource center
- ☐ extensive cultural and leisure program

UI = 45-minute unit of instruction

¹ The courses take place in the afternoon.

² At levels B1/B2 and higher, some courses take place in the afternoon.

⁷ Examinations to be held on the departure date

⁸ C2 courses take place only in Jan, May, Sept. and Nov.

INTENSIVE 8

approx. eight weeks at least 34 days of lessons	Berlin Freiburg
170 UI, approx. 25 UI per week	
max. class size: 16	
From €2,190	

There are four possible starting dates per year in Freiburg and six in Berlin.

Course description otherwise the same as Intensive 4 (see page 42).



VARIO

Can be booked for five days or longer	Berlin Bonn Bremen Dresden Düsseldorf Freiburg Göttingen	Hamburg Mannheim Munich Schwäbisch Hall
Approx. 25 UI per week 5 UI per day		
max. class size: 16		
€79 per course day		

If your schedule does not permit attendance for an entire course, you may join an ongoing Intensive 4 or Intensive 8 course that matches your level.

The minimum booking is for five days of classroom instruction, starting any week. Beginners can join only at the start of courses. For more information, please contact the institute.

TESTDAF EXAM PREPARATION

Approx. four weeks, 17 days of lessons	Bremen ³ Göttingen ³ Munich ³
85 UI, approx. 25 UI per week	
max. class size: 16	
€1,095	

DSH EXAM PREPARATION

Approx. four weeks, 17 days of lessons	Mannheim ³
85 UI, approx. 25 UI per week	
max. class size: 16	
€1,095	

GOETHE-ZERTIFIKAT C2 EXAM PREPARATION

Approx. four weeks, 17 days of lessons	Göttingen ³ Munich ³
85 UI, approx. 25 UI per week	
max. class size: 16	
€1,095	

INTENSIVE 2

Approx. two weeks	Bonn ²	Schwäbisch Hall
Nine days of lessons	Dresden ²	
45 UI, approx. 25 UI per week	Düsseldorf ²	
max. class size: 16	Göttingen ²	
€625	Hamburg ^{2, 8}	
	Mannheim ²	

For participants who only have two weeks and want to activate their German language skills. You will take part in an Intensive 4 course for two weeks. At the start of your course we will ask you about your individual learning goals and follow up with ongoing support during the learning process. This results in tight integration of the classroom lessons, self-study activities and language practice.

If you would like to continue learning at a later date at the level you reached in this course, please get in touch with us. We'll be happy to advise you.

Services

- ☐ intensive language training from Monday to Friday
- ☐ all levels
- ☐ placement test before the beginning of the course
- ☐ participation certificate
- ☐ exam opportunity on request
- ☐ all course materials
- ☐ self-directed learning in the media resource center
- ☐ extensive cultural and leisure program

UI = 45-minute unit of instruction

² At levels B1/B2 and higher, some courses take place in the afternoon.

³ Excluding exam fee

⁸ C2 courses take place only in Jan, May, Sept. and Nov.





INTENSIVE 2 – LANGUAGE AND CULTURE

Two weeks, 10 days of lessons	Berlin Dresden Munich Schwäbisch Hall Vienna
50 UI (25 UI per week)	
max. class size: 16	
€795	

Activate your German skills. With our open course program we can take into account your personal language-learning interests. Our attractive cultural and leisure-time program will give you the opportunity to learn German while really getting to know Germany. The course includes a daytrip on the weekend.

The choice is yours: Join us to explore the modern, world-class cities of Berlin, Munich or Vienna with their wealth of historical, cultural and tourist attractions. Schwäbisch Hall, with its many sights and wonderful excursion destinations, offers a chance to enjoy the charm and tradition of a small German town. Or you can experience the variety and character of life, as shaped by the student population, in the university city of Dresden.

Services

- ☐ intensive language training from Monday to Friday
- ☐ Berlin: all levels
Munich, Schwäbisch Hall: courses at Level A2 and higher
Dresden: Courses at Level B1 and higher
Vienna: Courses from Level A2 to Level B2
- ☐ placement test before the beginning of the course
- ☐ exam opportunity on request
- ☐ participation certificate
- ☐ all course materials
- ☐ self-directed learning in the media resource center*
- ☐ special cultural and leisure program designed to complement the language course
- ☐ one day trip

* We regret that a media resource center is not at the Vienna summer course location at present.

UI = 45-minute unit of instruction

HEIDELBERG SUMMER COURSE

Two weeks, 10 days of lessons	Heidelberg
40 UI (20 UI per week)	
max. class size: 16	
€1,695	

The Heidelberg Summer Course will sweep you away to one of Germany's most beautiful cities. In this course you'll combine an intensive German course in the mornings with an extracurricular and sports program offering lots of variety. The course takes place at the modern conference center of the Heidelberg University of Applied Sciences. You'll have full access to the fitness and sports facilities free of charge.

The course fee includes single-room accommodation with breakfast. The very well-appointed rooms are equipped with shower/WC, television and a telephone. Enrollment for this course is handled through the Goethe-Institut Mannheim.

Services

- ☐ intensive language training from Monday to Friday
- ☐ all levels
- ☐ placement test before the beginning of the course
- ☐ participation certificate
- ☐ all course materials
- ☐ cultural, sport and leisure program tailored to the course (including activities with trainers)
- ☐ two day excursions
- ☐ accommodation in the four-star Hotel Chester in comfortable double rooms for single occupancy with breakfast included.
- ☐ medical/accident insurance

UI = 45-minute unit of instruction



DEUTSCH 50 PLUS

Two weeks, 10 days of lessons	Schwäbisch Hall
40 UI (20 UI per week)	
max. class size: 12	
€775	

Combine your language-learning holiday with travel in Germany's most beautiful regions. In the company of course participants from all over the world, you'll get to know Germany and its people while experiencing the many facets of this country. When planning the course, we take into account your requests for special topics and include your learning objectives.

This course is intended for a group of participants of approx. 50 years of age and over. The lessons take place in the morning. In the afternoon you'll meet for various activities such as walks with the group, hikes, tours and museum visits. Of course you'll have the opportunity to make your own plans as well. In the evenings we'll arrange various activities such as attending the theater or concerts, movie nights, wine tastings and get-togethers with Germans. On the weekend we'll go on a daytrip with you.

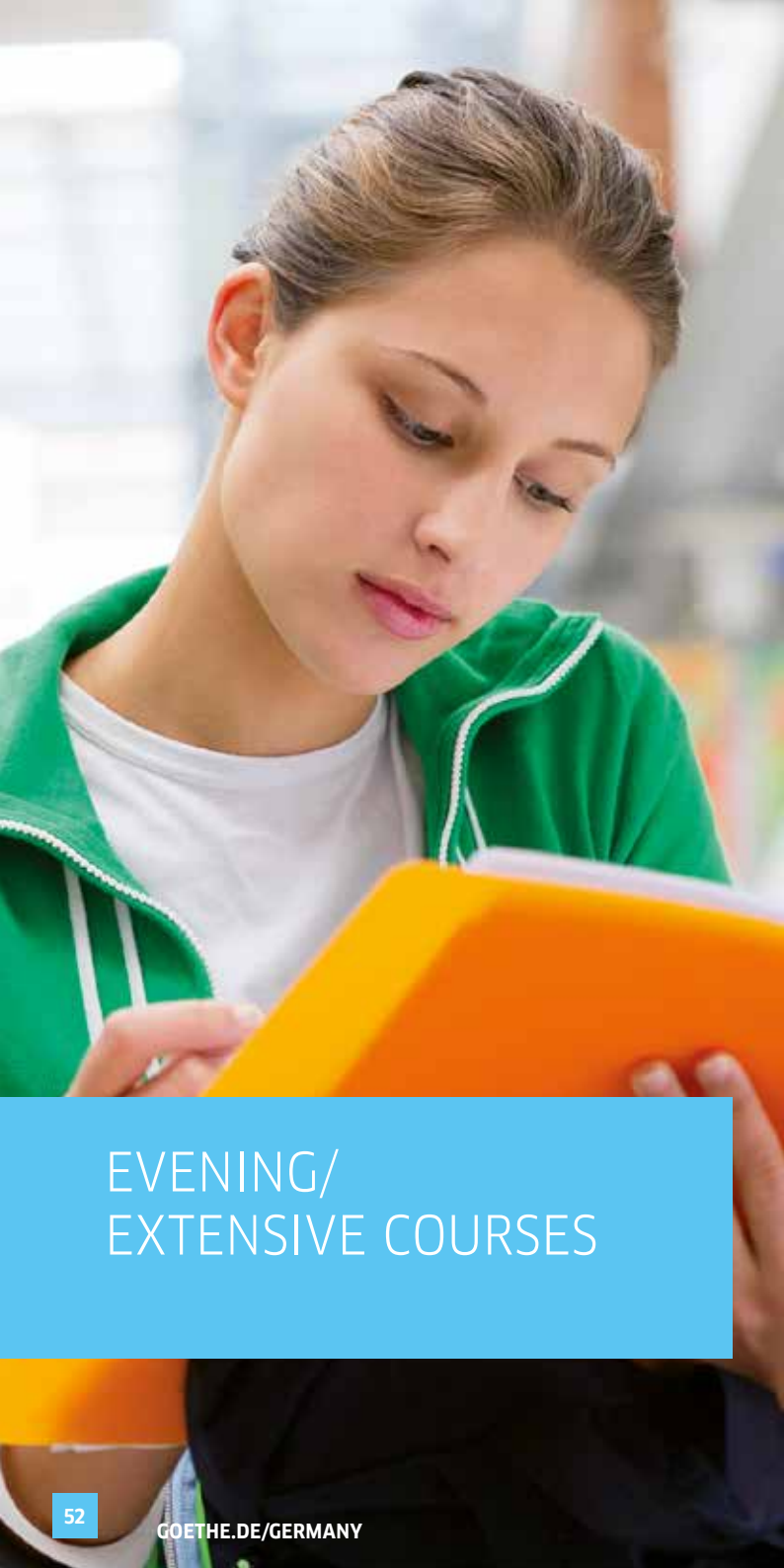
For more information, visit our website at goethe.de/50plus

Services

- ☐ intensive language training from Monday to Friday
- ☐ course at Level B1 and higher
- ☐ placement test before the beginning of the course
- ☐ participation certificate
- ☐ all course materials
- ☐ self-directed learning in the media resource center
- ☐ special cultural and leisure program designed to complement the language course
- ☐ one day excursion

UI = 45-minute unit of instruction





EVENING/ EXTENSIVE COURSES

EVENING/EXTENSIVE COURSES

GERMAN IN THE EVENING

Approx. 12 weeks, 24 evenings	Bonn Düsseldorf Hamburg Mannheim
72 UI , 6 UI per week	
max. class size: 16	
From €550	
Approx. 8 weeks, 24 evenings	Berlin Frankfurt/M. Munich
72 UI , 9 UI per week	
max. class size: 16	
From €619	

Are you living in Germany and interested in improving your German? Our “Deutsch am Abend” evening-time German courses offer you efficient language training with plenty of variety as well as qualified level placement and advice. In communicative lessons geared to the target group, you will get practice in all of the skills: reading, listening, writing and speaking. There is a strong focus on the language skills needed for real-world situations. At our institutes, you will learn in modern, well-equipped classrooms and will have full access to a media resource center, including an extensive collection of practice materials.

The Deutsch am Abend courses are based on the Common European Framework for Languages, and each course builds on the content of the previous one.

Services

- ☐ intensive language training
- ☐ all levels
- ☐ placement test
- ☐ participation certificate
- ☐ opportunity to take an exam
- ☐ all course materials
- ☐ individual learning in the media resource center

OTHER EVENING/EXTENSIVE COURSES

Berlin, Bonn, Frankfurt/M., Mannheim, Munich, Schwäbisch Hall

UI = 45-minute unit of instruction



PREMIUM COURSES

PREMIUM COURSES. **CUSTOM-TAILORED FOR SUCCESS**

You've set a goal for yourself and your expectations for a German course are clear: the greatest possible progress in the shortest possible time combined with special individual service and support. Then we certainly have the right solution for you in one of our small-group SuperIntensive or Intensive courses, an individual course or company language training.

In the SuperIntensive and Intensive courses you'll find efficient programs that will maximize your learning success in one, two or four weeks. The language training is flexibly adapted to your personal interests and goals.

- Right from the very first lesson you'll be taught exclusively in German in a small group with an average of five and a maximum of eight participants.
- All course materials are included.
- In the SuperIntensive courses you'll learn mornings and afternoons, with 40 45-minute units of instruction (UI) per week.
- The SuperIntensive 2 courses run continually all year, and the SuperIntensive 1 courses take place at several different scheduled dates throughout the year.
- After successfully completing your course you can also take one of our examinations, which are recognized around the world.

Please note: There are no lessons on the arrival and departure dates, during the Christmas period or on public holidays.

In all courses you'll have access to the media resource center for individual practice and study. And in your free time you can take part in our multi-faceted and varied cultural and leisure-time program.

For more information visit:

goethe.de/premium

→ Individual and small group courses, company language training: see p. 60-63

PREMIUM SUPERINTENSIVE 2

Two weeks, 10 days of lessons	Frankfurt/M. Munich
80 UI (40 UI per week)	
max. class size: 8	
From €1,625	

Our small-group SuperIntensive 2 program offers all-day language training at a high level of learning intensity and efficiency. The Super-Intensive courses will get you to your language-learning goals very fast. With the daily practice opportunities you'll be expressing yourself better in German within a short time.

You will be part of an active, highly motivated group with an average of five and a maximum of eight participants. The lessons are geared towards real-world usability and reflect important intercultural aspects of communication.

We have integrated phases of individual learning and practice into the course program, with your personal learning process supported by our experienced teaching teams.

Services

- ☐ Superintensive language training from Monday to Friday, mornings and afternoons
- ☐ Frankfurt/M.: all levels
- ☐ Munich: A1-C1
- ☐ placement test before the beginning of the course
- ☐ systematic advice on your learning path
- ☐ participation certificate
- ☐ opportunity to take an examination at the end of the course
- ☐ all course materials
- ☐ self-directed learning in the media resource center
- ☐ selected cultural and leisure program

UI = 45-minute unit of instruction



PREMIUM SUPERINTENSIVE 1

One week, five days of lessons	Frankfurt/M. Munich
40 UI	
max. class size: 8	
From €895	

For participants who only have one week available. In a full-day language course with an intensive and highly efficient approach, you'll achieve your personal learning goals very quickly.

You'll attend one week of a SuperIntensive 2 course, learning German as part of an active and highly motivated group of learners with an average of five and a maximum of eight participants. The lessons are geared towards real-world usability and reflect important intercultural aspects of communication.

If you would like to continue learning at a later date at the language level you reach in this course, please get in touch with us. We'll be happy to advise you.

Services

- ☐ SuperIntensive language training from Monday to Friday (mornings and afternoons)
- ☐ Frankfurt/M.: all levels
- ☐ Munich: A1-C1
- ☐ placement test before the beginning of the course
- ☐ participation certificate
- ☐ exam opportunity on request
- ☐ all course materials
- ☐ self-directed learning in the media resource center
- ☐ selected cultural and leisure program



PREMIUM INTENSIVE 4 PLUS

Four weeks, 20 days of lessons	Frankfurt/M.
80 UI in the course group – 20 UI per week	
plus 32 UI in the practice group – 8 UI per week	
max. class size: 8	
From €1,725	

In the Intensive 4 plus courses you will receive intensive group instruction in German in the morning. In the afternoon you will then practice the new material in a practice program prepared by your teachers. This will include vocabulary, structures and contents from the morning sessions involving a variety of approaches such as multimedia resources and creative activities. You may also be sent out into the town with special language assignments or just work on your own personal learning objectives. You will have the direct support of an experienced teacher who will provide practical learning tips and corrections.

Services

- ☐ intensive language training from Monday to Friday, with group lessons in the morning and the practice program (combined groups) in the afternoon
- ☐ all levels
- ☐ placement test before the beginning of the course
- ☐ systematic advice on your learning path
- ☐ participation certificate
- ☐ opportunity to take an examination at the end of the course
- ☐ all course materials
- ☐ self-directed learning in the media resource center
- ☐ selected cultural and leisure program
- ☐ special projects on German life and culture

UI = 45-minute unit of instruction

INDIVIDUAL AND SMALL-GROUP CLASSES

One participant	€60/UI
2–3 participants	€40/UI (per person)
4–8 participants	€30/UI (per person)

Are you looking for specific language training? Do you want to learn as quickly as possible? Then individual instruction or small-group classes offer an individual solution for achieving your personal learning goals.

The material covered in the classes is defined by your (or your group's) prior knowledge and learning objectives. That means that your teacher will plan a course built around your requested contents and geared to your needs. This will ensure rapid and efficient progress.

You can decide on the balance between basic German language skills (reading, listening, speaking, writing, structures) and specialized language from the world of business, politics, law, medicine or another area selected by you. We'll also be happy to prepare you for presentations or exams and develop your communication skills.

Services

- ☐ individual scheduling
- ☐ all levels
- ☐ placement test before the beginning of the course
- ☐ individual advice on the approach to learning and customized learning program
- ☐ participation certificate
- ☐ opportunity to take an exam
- ☐ all course materials
- ☐ self-directed learning in the media resource center
- ☐ optional participation in extensive cultural and leisure program

Training venue

Training is provided in the fully-equipped, modern classrooms of the Goethe-Institut or, if desired, at a training location selected by you.*

* Additional costs may result in case of extended travel times to training locations.

UI = 45-minute unit of instruction



COMPANY LANGUAGE TRAINING

Our company training offers a wide range of course options for various employee groups in your organization to learn German or improve their skills in the language. We take a targeted approach to acquiring the language they need for their work and expanding their knowledge of specialized language needed in your industry. At the same time, we work to enhance their intercultural skills.

Flexible instruction tailored to your needs

Our professional trainers are experienced in working in an intercultural environment. They provide interactive instruction with plenty of variety through a wide range of activity formats. The content is always geared to the specific requirements of the participants. In the classroom, only German is spoken.

Individual advice and consultation

You'll have a personal contact at our institute. We will be happy to communicate with you on a regular basis and provide feedback on progress. In an extensive consultation we will develop a program for your employees geared to your needs and theirs, by working with you to define the course contents and individual training formats.

Training location

In the modern, fully equipped classrooms of one of the 12 centrally located Goethe-Instituts in Germany, or at your company premises.

Training formats

- ☐ Customized group training
- ☐ Customized individual training

Services

- ☐ individual needs analysis and consultation
- ☐ training at all levels
- ☐ placement test before the beginning of the course
- ☐ all course materials included
- ☐ regular monitoring of learning progress
- ☐ participation certificate
- ☐ individual learning in the media resource center
- ☐ opportunity to take an exam
- ☐ feedback to your company

Does your company operate all over Germany? Are you interested in a training program offered at multiple locations? Then contact us at

firmentraining@goethe.de
goethe.de/firmentraining





SPECIAL COURSES FOR PROFESSIONALS

SPECIAL COURSES FOR PROFESSIONALS. GERMAN FOR YOUR CAREER

Do you need German for your everyday work – for your current or future responsibilities? In our language courses you can quickly and effectively develop the language skills you need for your career. You'll also become familiar with cultural differences and everyday manners in Germany.

In all courses you'll have access to the media resource center for individual practice and study. All course materials are included.

Our cultural and leisure-time program will include company tours and opportunities to talk with people working in your field. This will give you insights into everyday working life in Germany while providing a chance to use your knowledge in a personal exchange of views and experiences.

For further information on the individual courses, see our website at goethe.de/spezial

If you have more detailed questions on specific courses, the institutes offering the courses will be happy to help.

GERMAN AND INTERNSHIP

Approx. four-week intensive German program 17 days of lessons and four-week internship 20 internship days	Schwäbisch Hall
85 UI, 25 UI per week	
15 UI internship follow-up Three days of lessons	
max. class size: 16	
€1,655	

**GERMAN COMMUNICATION TRAINING FOR
THE CAREER WORLD - INTENSIVE**

Two-week intensive program 10 days of lessons	Freiburg
60 UI (30 UI per week)	
max. class size: 12	
€1,095	

GERMAN FOR LEGAL PROFESSIONALS

Two-week intensive program 10 days of lessons	Bonn
60 UI (30 UI per week)	
max. class size: 16	
€1,455	

MEDICINE. PROFICIENCY. GERMAN.

Four-week program, 17 days of lessons	Freiburg
85 UI	
max. class size: 12	
€2,900	

GERMAN COMMUNICATION TRAINING FOR DOCTORS

Two-week program, Eight days of lessons	Bonn Dresden Düsseldorf Göttingen
40 UI	
max. class size: 16	
€540	
Four-week program, 16 days of lessons	Bremen Mannheim
80 UI	
max. class size: 16	
€1,080	
One, two or four weeks	Other course locations on request
20, 40 or 80 UI	

UI = 45-minute unit of instruction



For more information, visit: goethe.de/spezial



YOUNG LEARNERS' PROGRAM

COURSES FOR CHILDREN AND TEENS, GERMAN FOR SCHOOL CLASSES. LEARNING GERMAN THE EASY WAY

Our program for young learners at our institutes in Germany brings together children, teens and young adults from all over the world. You'll make new friends and spend an exciting holiday, packed with sports, creative activities and leisure-time fun. At the same time you'll also see how much fun it can be to learn German together in an intensive course.

Accommodation is at selected boarding schools, sports academies and conference centers in the most beautiful regions in Germany. All meals are included. Highly qualified and experienced teachers lead our courses for young learners of all ages – from 9 to 21 years of age – at various levels. You can choose from two-week, three-week and four-week courses.

- Right from the very first lesson, the learning groups, with a maximum of 16 participants, will be taught in German only.
- All course materials are included.
- Lessons are generally in the morning.
- At some course locations we also offer German for Teens as an intensive program with lessons in the mornings and afternoons.
- At the end of the course the opportunity is available to take an internationally recognized examination. The exams are tailored to the various age groups.

Our staff members are on hand for the participants 24 hours a day. They organize and plan the sports and recreation program and are always there to answer any questions that come up. They are hand-picked by the Goethe-Institut for these courses and are experienced at working with young people.

For detailed information on the individual courses, see our website at goethe.de/youth

COURSES FOR CHILDREN AND TEENS

German for children (9-12)	
2 weeks 40 UI, 20 UI per week	€1,710
3 weeks 60 UI, 20 UI per week	€2,530
German for teens (12-15 and 14-17)	
3 weeks 72 UI, 24 UI per week	€2,530
German for teens, Intensive (14-17)	
3 weeks 90 UI, 30 UI per week	€2,660
German for teens, (14-17)	
4 weeks 96 UI, 24 UI per week	€3,300
German plus Soccer, (14-17)	
3 weeks 72 UI, 24 UI per week	€2,530
German for young adults (18-21)	
3 weeks 72 UI, 24 UI per week	€2,530

Children and teens from all over the world spend their summer holidays together and improve their German skills through activities that feel more like play than school. The supervised extracurricular program has lots of variety and includes plenty of sports and group activities.

Services

- ☐ language training from Monday to Friday (mornings and on some afternoons)
- ☐ all levels
- ☐ placement test at the beginning of the course
- ☐ exam opportunity on request
- ☐ all course materials
- ☐ participation certificate
- ☐ extensive cultural, sport and leisure-time program
- ☐ free Internet access
- ☐ medical/accident insurance
- ☐ round-the-clock supervision and care
- ☐ accommodation in boarding schools (or hotels for young adults)
- ☐ full board – all meals

UI = 45-minute unit of instruction



GERMAN FOR SCHOOL CLASSES

One week or longer

From 20 UI per week, five days of lessons

for school classes with 10 or more participants

€615 per pupil

Move your classroom to Germany! Your pupils will greatly improve their knowledge of the language and their rapid progress will motivate them to learn even more.

Flexible lesson planning

We'll discuss the course contents with you in detail. This will give you a chance to adapt your own lessons accordingly. On request we can work with you to organize a supplementary project about Germany for your class to complete.

Extracurricular program with plenty of variety

The lessons will be complemented by an attractive leisure-program to be planned in consultation with you. It will leave your pupils with lasting memories of their learning experience in Germany that will have a positive impact on their learning long after they return home.

Individual advice and consultation

The customer service staff at the Goethe-Institut will provide extensive advice and work with you to design a program geared to the needs of your pupils – also for courses lasting several weeks.

Services

- ☐ language training from Monday to Friday
- ☐ 20 UI per week, five days of lessons
- ☐ individual advice and course planning in consultation with the school
- ☐ all levels
- ☐ all course materials
- ☐ participation certificate
- ☐ placement test (on request)
- ☐ guided city tour and two other leisure-time activities on weekdays
- ☐ individual learning in the media resource center
- ☐ exam opportunity on request
- ☐ free internet access at the institute

UI = 45-minute unit of instruction

YOUNG LEARNERS' PROGRAM

Accommodation

- ☐ in youth hostels or youth guesthouses
- ☐ dorm-style rooms for pupils
- ☐ single rooms for accompanying teachers
- ☐ breakfast and packed lunch

Accommodation for one accompanying person is free of charge.

Optional

(Not included in course fee)

- ☐ one project on a topic related to Germany and its people (4 UI per week) in addition to the regular lessons
- ☐ one day excursion per weekend in case of courses lasting two weeks or longer
- ☐ airport transfer
- ☐ weekly ticket for public transportation
- ☐ dinner

Are you interested in working with more than one location in Germany? Then contact us at schulklassen@goethe.de. We'll be glad to advise you.

To download a brochure or for further information visit goethe.de/schulklassen

The Goethe-Instituts in Germany are partners of Germany's youth hostels.



INFORMATION ON COURSE BOOKINGS. SIMPLE AND CONVENIENT



Online registration

Enroll online at

goethe.de/anmeldung-deutschland

You can also check for available space on the course you wish to select.



Enrollment by fax, letter or e-mail

Please complete the enrollment form enclosed with this brochure. Send the completed enrollment form by mail or fax to the Central Customer Management Office (see below), the institute in Germany you wish to attend, or simply the Goethe-Institut in your area.



Contact

Goethe-Institute in Deutschland
Kundenmanagement
Goethestr. 20
80336 München, Germany

Telephone: +49 89 15921-200

Fax: +49 89 15921-202

E-mail: deutsch@goethe.de

goethe.de/germany

Office hours

(Central European Time)

Monday – Thursday, from 8:00 a.m. – 5:00 p.m.

Friday from 8:00 a.m. – 3:00 p.m.



Visa information

If your country is subject to visa requirements, please enroll at least four months before the start of the course. Information on visa requirements, entering Germany and your stay is available on our website: You can apply for a visa online at:

auswaertiges-amt.de/visum



Terms of Payment

For information on terms of payment, please refer to Item 2 under Terms and Conditions on the enrollment form.

- ☐ Credit card payment: Online credit card payment is possible after you have received the invoice.



Bank details

Commerzbank

Bank code: 700 800 00, Account number: 316 006 300

SWIFT-Code/BIC: DRES DE FF 700

IBAN: DE 79 7008 0000 0316 0063 00

Mailing address:

Commerzbank, Promenadeplatz, 80273 München



Accommodation

We'll be happy to arrange accommodation in one of our hostels, at a hotel or in a homestay situation. For prices and other information on accommodation, please refer to the course listing or the web pages of the Goethe-Instituts in Germany:

goethe.de/unterkunft

Please note:

- ☐ You cannot check into the accommodation arranged by the Goethe-Institut until your arrival date.
- ☐ As a rule, a deposit must be paid for the rooms on the arrival date.



Medical Insurance

Your health is important to us. We therefore strongly advise you to take out health insurance for the duration of your language-learning stay in Germany. Please check in any case whether your own health insurance provides adequate coverage.

Incidentally: As soon as you have enrolled for your German course, you can take out a special insurance policy online with our partner, Klemmer-Assekuranz (currently €1.40 per day):

goethe-travelinsurance.de

This insurance protection meets the German regulatory standards (for example when applying for a visa).



Benefits/subsidies

Goethe-Institut language courses provide excellent value. There may also be opportunities to reduce your costs even further. Our advice: Contact your local tax office for information on possible tax deductions; ask your employer about opportunities to take leave for a language course at the Goethe-Institut; ask your training manager / university about receiving credit for Goethe-Institut language courses.



Questions, suggestions, comments?

We endeavor to meet the highest quality standards at all times to ensure that your stay with us is a complete success. However, our staff at your course location will be very happy to help if any problems or concerns arise.

If you have further questions or suggestions, please do not hesitate to contact our central Customer Management Office: Goethe-Institute in Deutschland, Goethestr. 20, 80336 München, Germany, E-mail: deutsch@goethe.de

TERMS AND CONDITIONS

1. General Requirements

Course participants must be at least 18 years of age.

2. Participation / Enrollment confirmation

- 2.1. After enrolling in the course, the participant is sent confirmation (referred to below as "enrollment confirmation") by Goethe-Institut e.V. ("GI") of enrollment in the selected course, the accommodation booking and the meal arrangements (referred to as "the course"). With receipt of the enrollment confirmation by the participant, the contract takes effect.
- 2.2. An invoice is forwarded with the enrollment confirmation, informing the participant of the payable course fees, which include all services specified in 2.1. above (instruction, accommodation, meals), indicating the payment deadline and the participant number.

3. Prices and terms of payment

- 3.1. The price list for courses, accommodation and meals in effect at the time of enrollment is an integral part of the contract. Please refer to www.goethe.de/anmeldung-deutschland.
- 3.2. The course fee is payable in full to the GI at the payment deadline shown in the invoice. The payment date is defined as the date at which the payment is credited to the GI account specified in the enrollment confirmation. The money transfer must indicate the course participant number.
- 3.3. All bank charges related to the payment of the course fee shall be borne by the course participant.
- 3.4. If the GI does not receive full payment of the course fees by the due date, the participant will no longer be entitled to the services booked. In this case the GI is entitled to make the services available to other interested parties.
- 3.5. In case of non-attendance at the booked course, delayed arrival, early departure or withdrawal from a course, or any other absences (e.g. due to illness), there is no claim to reimbursement of the course fees.

4. Changes to course bookings

In exceptional cases participants may change the services booked (e.g. the course date) in consultation with the GI. The first change is free of charge. A fee of €60 is payable for each additional booking change.

5. Cancellation

- 5.1. The course participant can cancel the course booking subject to the following conditions.
 - ☐ In case of cancellation no later than four weeks prior to the start of the course, the GI will withhold an administrative fee of €160.
 - ☐ In case of cancellation no later than one week prior to the start of the course, GI will withhold an amount equal to 30% of the course fee, but not less than the administrative fee of €160.
 - ☐ In case of cancellation no later than one day prior to the start of the course, GI will withhold an amount equal to 50% of the course fee, but not less than the administrative fee of €160.
 - ☐ In case of withdrawal after the start of the course, GI will withhold 100% of the course fee.

The course participant may submit evidence to show that it would be appropriate for a lesser amount to be withheld in an individual case.
- 5.2. The course participant can cancel accommodation arrangements free of charge up to four (4) weeks before the start of the course. Cancellation at a later date is not possible.
- 5.3. The cancellation must be submitted in writing (or by e-mail) to GI using the contact addresses indicated in the enrollment confirmation. The cancellation date is defined as the date of receipt of the cancellation declaration at the contact address specified in the enrollment confirmation.

6. Course level assignment / class size

- 6.1. The assignment to a course level is made on the basis of a placement test carried out at the course location.
- 6.2. In all courses, the maximum class size is 16.

7. Accommodation

- 7.1. On request, the GI offers accommodation for rent. Any request for the booking of accommodation must be indicated when enrolling. Prior inspection of the accommodation is not possible.
- 7.2. The accommodation is rented only on a course by course basis. The date for moving into the accommodation is the published arrival date, and the date for moving out is the published departure date.
- 7.3. The course participant is responsible for exercising due care in the accommodation and keeping it clean during the rental period. At the end of the rental period, the accommodation must be left in a clean and tidy state.
- 7.4. If the accommodation is in a guesthouse, a proper handover must take place at the beginning and end of the rental period between the course participant and a person authorized by the GI (inspection of the state of the rooms, inventory of equipment and other items, etc.).
- 7.5. Guests of the course participant are permitted to stay overnight only with the express permission of the GI.
- 7.6. Any violation of the landlord's house rules will result in termination of the rental agreement without notice with no claim to replacement accommodation or reimbursement of rent paid.
- 7.7. If the accommodation is recommended by the GI, e.g. through a link on the GI website, then GI does not act as the landlord of the accommodation.

8. Responsibilities of participants

- 8.1. It is the responsibility of the course participant to ensure at his/her own expense that his/her stay in Germany is in compliance with the law and that he/she is in possession of any required entry permit, residence permit or visa.
- 8.2. It is the sole responsibility of the course participant to take out health insurance and accident, liability and personal property insurance. GI assumes no liability in this area.
- 8.3. Participants are obliged to comply with the course rules and house rules applicable to the Goethe-Instituts.

9. Liability of the GI

- 9.1. GI is subject to liability – regardless of the legal cause – only in case of gross negligence or intent.
- 9.2. GI is also liable in case of ordinary negligence in case of damage resulting in death, injury or harm to health as well as damages for the culpable violation of a material contractual violation.
- 9.3. Any other contractual or tort claims of the course participant are explicitly precluded.

10. Force majeure

Neither GI nor its employees are liable for non-performance of contractual obligations or damages to the extent that they are caused by force majeure, in particular fire, water, storm or other natural events, explosion, strike, war, civil unrest or other reasons outside the sphere of responsibility/influence of the Goethe-Institut.

11. Privacy protection

GI collects, processes and uses the personal data of the course participant both for the purpose of fulfilling the contract signed with the course participant and as permitted by law and under the terms of any signed declaration of consent in compliance with privacy protection laws. For further details see the separate privacy declaration to which we hereby explicitly refer.

12. Applicable law

These terms and conditions and all legal relations between the GI and the course participant are subject to the laws of the Federal Republic of Germany. The place of jurisdiction is Munich, Germany.

13. Severance clause

Should sections or individual formulations in these terms and conditions prove invalid or ineffective, this shall have no effect on the remaining sections and their validity. The ineffective provision shall be replaced by the legally admissible provision that most closely approximates the content and economic effect of the ineffective provision.

Publisher

© Goethe-Institut e.V., June 2015

Coordination

Kay Hug, Lena Westerbarkey,
Marketing und Vertrieb Goethe-Institute in Deutschland

Design and production

QS2M Werbeagentur GmbH, München, www.qs2m.de

Printing and binding

FIBO DRUCK- UND VERLAGS GMBH, München

Photo credits

1, 43, 52, 54, 58) Masterfile 4) Fotolia, ag visuell 5) Bernhard Ludwig 6) Getty Images, E+, Tomml 7) Fotolia, Petr Vaclavek 8) Barbara Eismann 9) Getty Images, Vetta, Luis Alvarez 10) Getty Images, Caiaimage, Sam Edwards 15) Andreas Lange 14) iStock/Getty Images Plus, querbeet 16) Fotolia, Otto Durst 17) A. Hoehner 18) Fotolia, thorabeti 19, 35, 71) Thomas Koy 20) Fotolia, stockWERK 21) Lothar Sprenger 22) Fotolia, davis 24) Tourismus Amt Frankfurt 25) Valentin Fanel Badiu 26) iStock, peresanz 27, 29, 31, 33, 37) Goethe-Institut 28) Torsten Krüger 30) Hamburg Tourismus 34) Getty Images, LOOK, Franz Marc Frei 37) Ufuk Arslan 38/39) Georg Bodenstein, Wien 40) Getty Images, Stockbyte, Clerkenwell 45) plainpicture, fStop, Holger Hill 46) Getty Images, Digital Visions, Chris Tobin 49) Fotolia, sborisov 51) imago stock&people 57) Getty Images, E+, urbancow 61) Getty Images, E+, Clerkenwell 63) Getty Images, OJO Images, Sam Edwards 64) Getty Images, Brand X Pictures, Westend61 67) Getty Images, OJO+, Caiaimage/Sam Edwards 68) plainpicture, Image Source, Dreampictures 73) Fotolia, Monkey Business



LEVELS AND EXAMINATIONS

EU Council language levels	Language skills
C2	Can understand with ease virtually everything heard or read. Can express him/herself spontaneously, very fluently and precisely, differentiating finer shades of meaning even in more complex situations.
C1	Can understand a wide range of demanding, longer texts, and recognize implicit meaning. Can use language flexibly and effectively for social, academic and professional purposes. Can produce clear, well-structured, detailed text on complex subjects.
B2	Can understand the main ideas of complex text on both concrete and abstract topics, including technical discussions in his/her field of specialization. Can interact with a degree of fluency and spontaneity that makes regular interaction with native speakers quite possible without strain for either party. Can produce clear, detailed texts on a wide range of subjects.
B1	Can understand the main points of clear standard input on familiar matters regularly encountered in work, school, leisure, etc. Can deal with most situations likely to arise while traveling in an area where the language is spoken. Can produce simple connected text on topics which are familiar or of personal interest.
A2	Can understand sentences and frequently used expressions related to areas of most immediate relevance. Can communicate in simple and routine situations about familiar things. Can describe in simple terms aspects of his/her background, immediate environment and matters in areas of immediate need.
A1	Can understand and use familiar everyday expressions and very basic phrases. Can introduce him/herself and others and can ask and answer questions about personal details.

UI = 45-minute unit of instruction

1 Number of units of instruction per level generally needed in Intensive or SuperIntensive courses to reach the corresponding Goethe Certificate. Individual factors such as prior language learning experience may influence this.

2 These examinations are available only to participants in courses for children and teenagers.

Examinations at the Goethe-Institut	Examination fee for course par- ticipants (in €)	Examination fee for external exam candidates (in €)	Minimum UIs ¹
BULATS Deutsch-Test für den Beruf	55	65	
Goethe-Zertifikat C2 Großes Deutsches Sprachdiplom	220	295	160 – 170 UI and more
Goethe-Zertifikat C1	170	250	160 – 170 UI
TestDaF	175	175	
Goethe-Zertifikat B2	150	200	240 – 255 UI
TestDaF	175	175	
Goethe-Zertifikat B1	120	180	160 – 170 UI
Goethe-Zertifikat A2 Start Deutsch 2	80	115	160 – 170 UI
Goethe-Zertifikat A2 Fit in Deutsch 2 ²	80		
Goethe-Zertifikat A1 Start Deutsch 1	70	95	80 – 85 UI
Goethe-Zertifikat A1 Fit in Deutsch 1 ²	70		

ive courses at a Goethe-Institut in Germany to reach the indicated level and complete the experience and the learner's native language may also play a role.
ns.

BERLIN

BONN

BREMEN

DRESDEN

DÜSSELDORF

FRANKFURT AM MAIN

FREIBURG

GÖTTINGEN

HAMBURG

MANNHEIM

MÜNCHEN

SCHWÄBISCH HALL

HEIDELBERG

Summer course location

WIEN

Summer course location

**GOETHE-INSTITUTE
IN DEUTSCHLAND**
Kundenmanagement
Goethestr. 20
80336 München, Germany

Telephone: +49 89 15921-200
Fax: +49 89 15921-202
E-mail: deutsch@goethe.de
goethe.de/germany



goethe.de/googleplus/de



goethe.de/facebook-deutschlernen

Scan the code
to watch the video!

