



Ismael Shivute and Mateus Alfeus work

“Side by Side”

to create an exhibition of sculptures

GOETHE
INSTITUT

29th May - 15th June 2018
Side by Side
by Ismael Shivute and Mateus Alfeus
Curators: StArt Art Gallery
Goethe-Institut Namibia

Relax
Mateus Alfeus
2018
Reclaimed Metal
780 x 600 x 100 mm



Side by Side

An exhibition of sculptures by
Ismael Shivute and Mateus Alfeus
Goethe-Institut

Collaboration and conflict are themes pertinent to various structures and relationships around us. Opposing concepts in the process of construction and destruction, these dynamics often have positive and negative connotations. Working side by side to create this exhibition, Ismael Shivute and Mateus Alfeus have explored the tensions of this theme. Using recycled materials to create analogies for violence within our communities, Alfeus has often worked with the visual metaphor of dogs fighting. Also using found metals and other materials, Shivute's oeuvre thus far has examined the daily challenges and successes of his immediate environment and community.

This body of work was created in a shared studio space at the Katutura Community Art Centre. Artists

often share space and work together, growing through mutual critique and evaluation. These cohesive environments can profoundly influence the work made. Working side by side has its challenges and benefits and as such we see work that develops not only out of challenge and conflict but also collaboration.

In the construction of their sculptures, Shivute and Alfeus have worked in mediums that require hard physical labour, heat and machinery. These processes have a physicality to them that may read as violence. Often the artists push the materials to reflect organic shapes that are not inherent in their industrial structure. This conflict finds resolution in the final artworks. Some of this conflict is visible in the final product, in the welded joints and bended metal. However the works also read cohesively, whole unto themselves.

Both in Namibia and globally there seems to be a polarization of political positions. The divisions in

society, our borders, our social structures, seem only to be strengthening over time, as we become more and more rigid in our identities, as citizens and individuals. These dividing structures often seem to come at the expense of embracing diversity and working towards equality. While conflict often comes as a necessary part of communication we must remember to keep the final goal in mind if we are going to continue working side by side.

*Goethe-Institut Namibia
1-5 Fidel Castro Street, Windhoek
Tel: 061 22 57 00 | info.windhoek@goethe.de*

*For more information about this exhibition please contact
StArt Art Gallery at 0816411305 or startartnam@gmail.com*

*Curation: Helen Harris and Gina Figueira
Photography: SkySam Photography
Layout and design: Helen Harris*

© StArt Art Gallery



Give it Away
Mateus Alfeus
2018
Reclaimed Metal
600 x 860 x 400 mm



Not Again
Mateus Alfeus
2018
Reclaimed Metal
310 x 420 x 170 mm



Don't Touch
Ismael Shivute
2018
Reclaimed Metal
330 x 340 x 200 mm

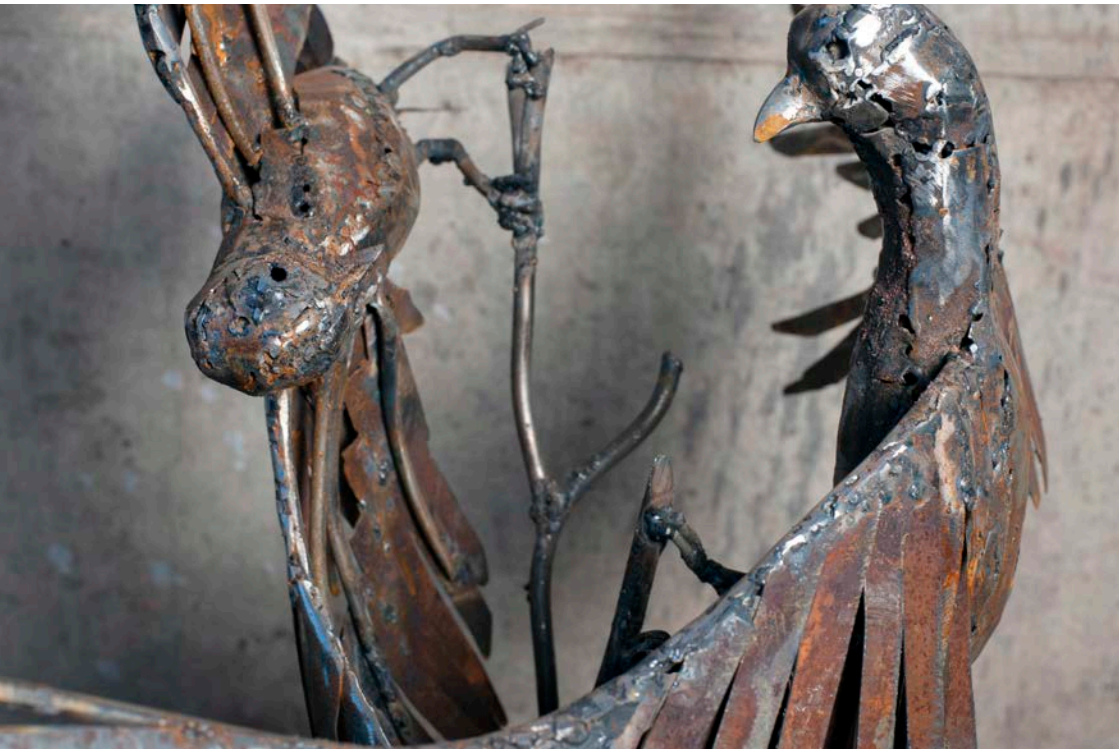




The Beetle
Ismael Shivute
2018
Reclaimed Metal
330 x 340 x 200 mm







Just Quit
Mateus Alfeus
2018
Reclaimed Metal
940 x 760 x 270 mm

Crazy Artist
Ismael Shivute
2018
Reclaimed Metal
1220 x 940 x 800 mm









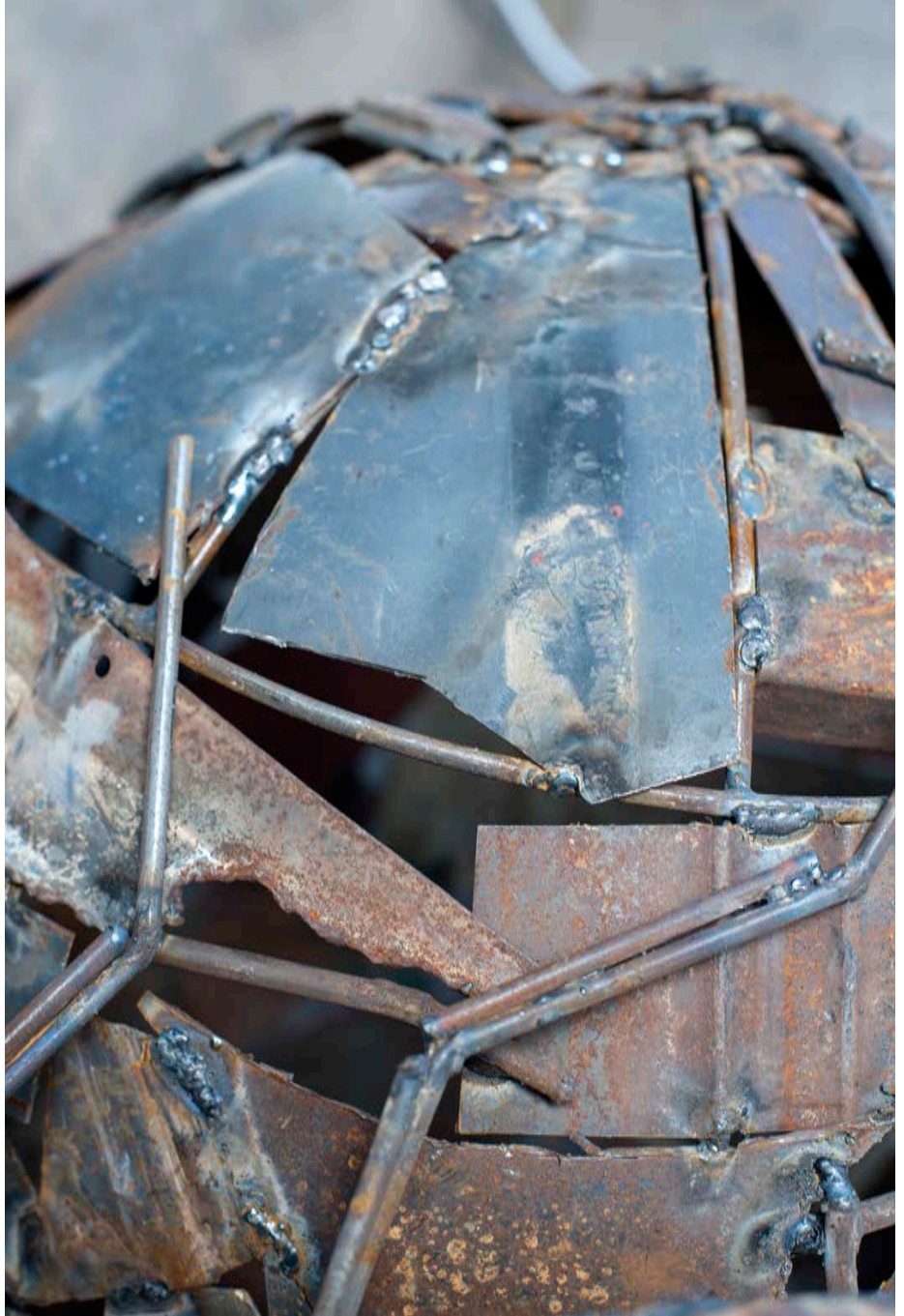
Let me take it
Mateus Alfeus
2018
Reclaimed Metal
860 x 300 x 400 mm

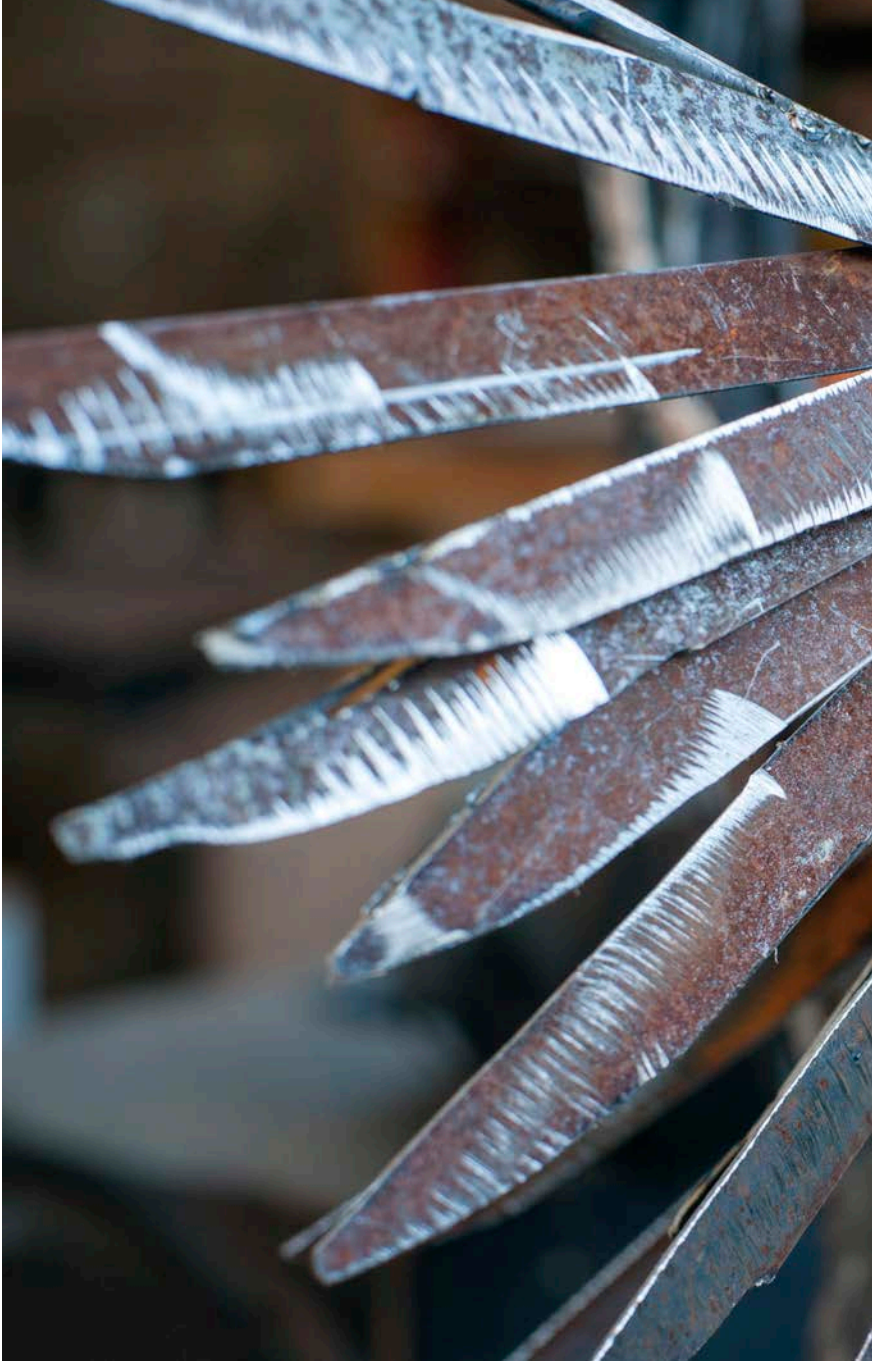


Mateus Alfeus (left) was born and grew up in Oshakati, in northern Namibia. In 2017 he received his Diploma in visual arts from the College of the Arts in Windhoek, majoring in Sculpture. Over the last year, Alfeus' work has made a strong impact on the Namibian art scene. Though relatively new to the Namibian art world, two of his works have already been collected by the National Art Gallery of Namibia (NAGN) and reside in their permanent collection. In 2017 Alfeus participated in the Bank Windhoek Triennial at the NAGN and has participated in several other exhibitions at the NAGN, The Project Room and the FNCC.

Ismael Shivute (right) grew up in northern Namibia. Shivute studied Sculpture and Product Development in the Department of Visual Art at the College of the Arts. Shivute has participated in many group exhibitions locally and internationally, and had a solo exhibition at the National Art Gallery of Namibia in 2016. Shivute's mixed media artworks are inspired by his environment, often working with found or recycled materials drawn from the area in which he lives. Shivute's artworks currently reside in the National Art Gallery of Namibia collection as well as private collections in Namibia and abroad, including the Würth Collection in Germany.







Start Art Gallery Catalogues, Vol 7

START
art gallery