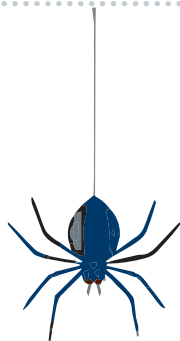
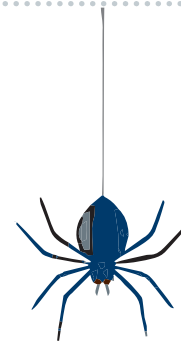


die Klauen

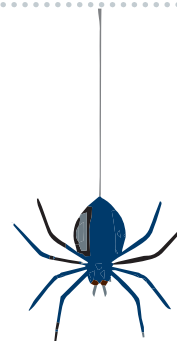


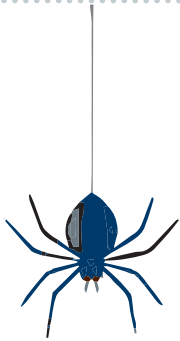
die Laufbeine

die Spinnenwarze



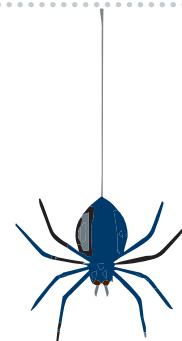
die Augen





der Hinterleib

der Vorderleib





Professor Einstein

das Auge

der Mund

die Nase

die Haare

das Ohr

der Arm

die Hand

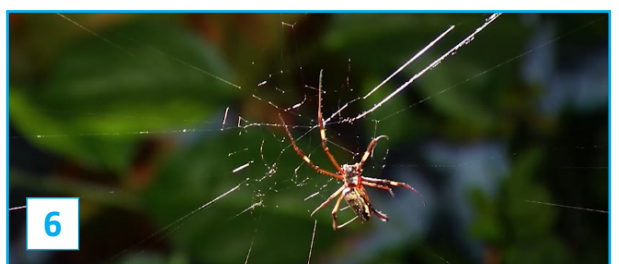
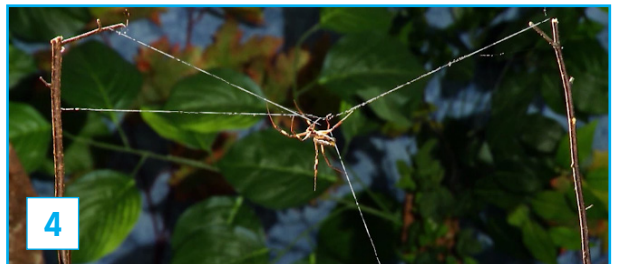
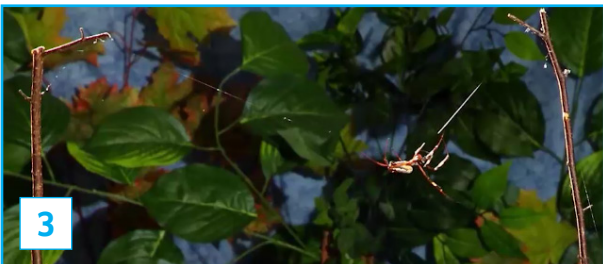
der Fuß

das Bein

der Bauch

Worksheet Spider web (Spinnennetz)

How do spiders spin their webs? Match the text to the pictures.



Now the spider builds a spiral. It spins threads first from inside to outside, then again from outside to inside.

Then the spider goes to the other side and attaches the thread there too.

Then it climbs into the middle and guides the thread down.

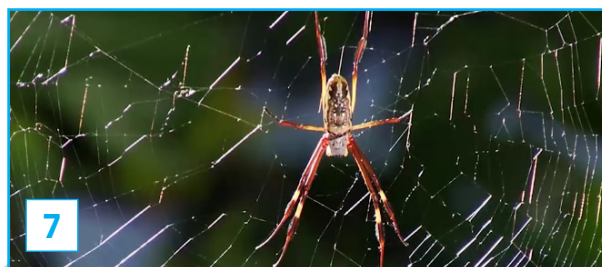
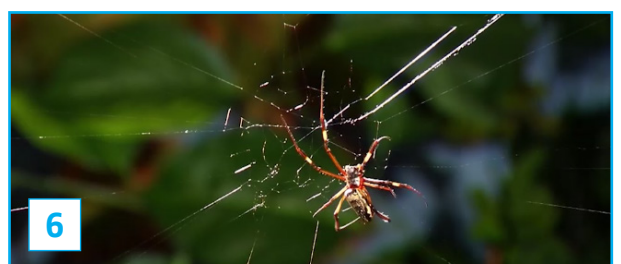
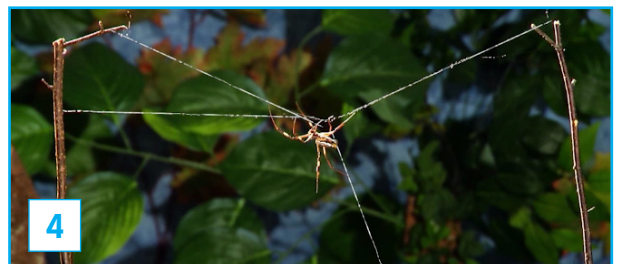
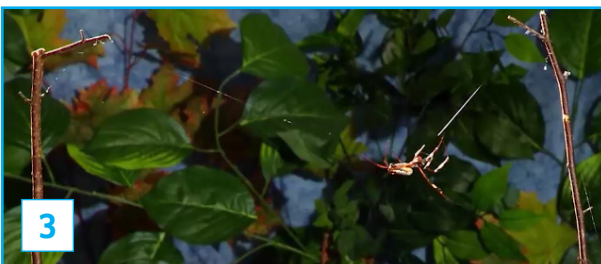
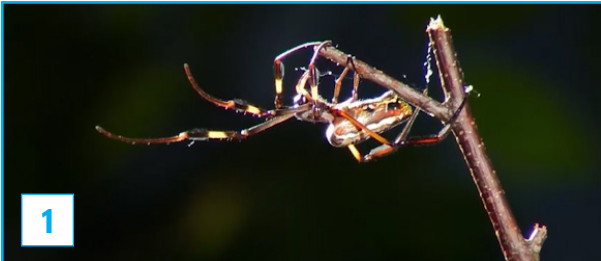
The spider first attaches the thread to the top of a branch.

Then the spider spins the spoke threads. They have this name because they look like the spokes on a bicycle.

The web is finished after about an hour.

Now the framework for the web is finished.

Answer key *Spider web (Spinnennetz)*



1. The spider first attaches the thread to the top of a branch.

2. Then the spider goes to the other side and attaches the thread there too.

3. Then it climbs into the middle and guides the thread down.

4. Now the framework for the web is finished.

5. Then the spider spins the spoke threads. They have this name because they look like the spokes on a bicycle.

6. Now the spider builds a spiral. It spins threads first from inside to outside, then again from outside to inside.

7. The web is finished after about an hour.

Word cards *Spider* (Spinne)

abdomen



chest



eyes



claws



legs



spinneret



Word cards *Spider* (Spinne)

wings



arms



ears



hand



foot



tail



My word bank sheet *Spider web* (Spinnennetz)

