

**Photo** *Station information display (Haltestellenanzeige)*



Photo: ©Antje Hübner

**Photo** *Display in the tram (Anzeige in der Straßenbahn)*



Photo: ©Antje Hübner

Photo Route map at the tram stop (Fahrplan in der Straßenbahnhaltestelle)



Foto ©Antje Hübner

**Worksheet** *Who does what? (Wer macht was?)*

Who does what? Match the roles.

1. Ms. Pötenlütke	2. Chistoph	3. Mr. Früh

**runs**

**turns on the tram**

**extends the electricity collector**

**misses the tram**

**folds out the rear-view mirrors**

**has to wait**

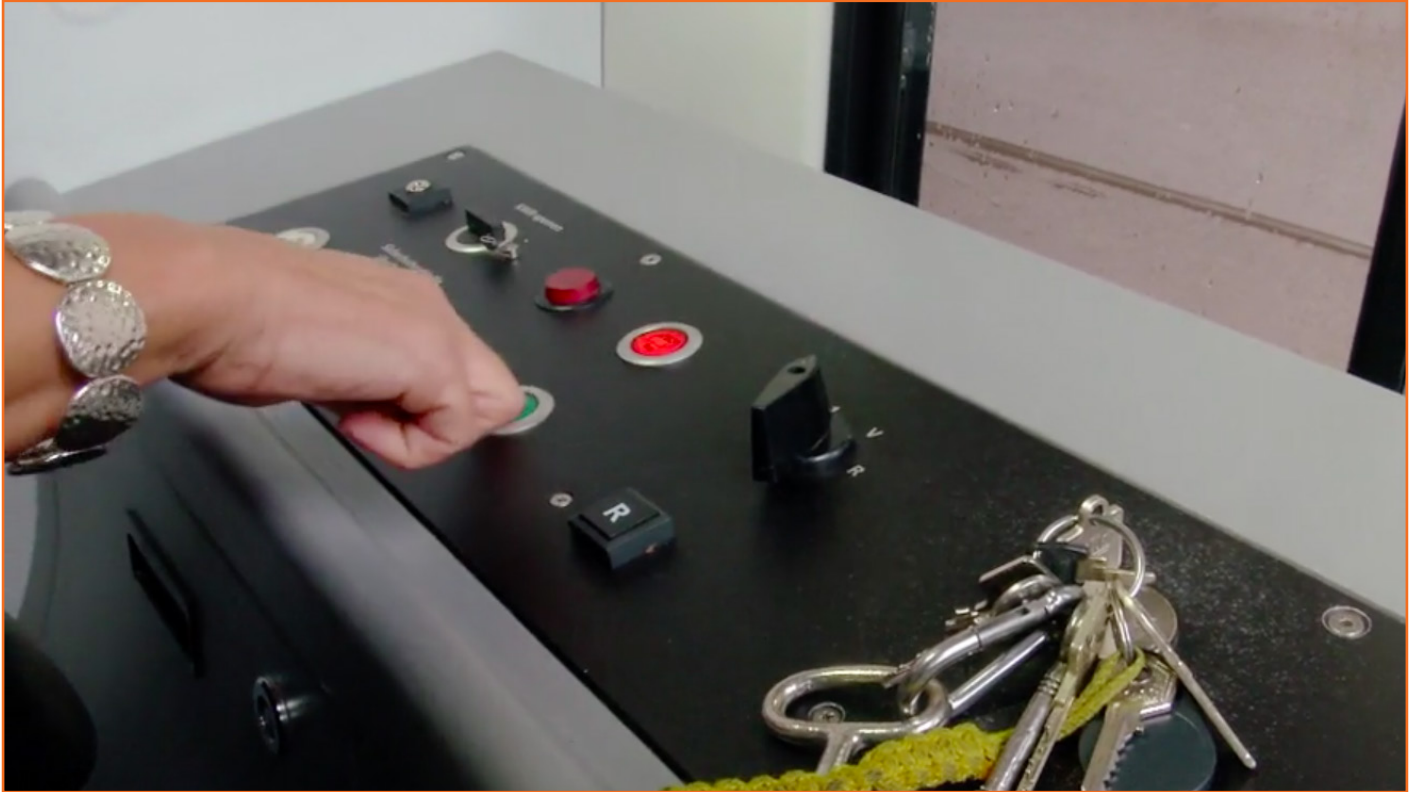
**sits in front of the screen in the control room**

**enters the line**

**Answer key** *Who does what? (Wer macht was?)*

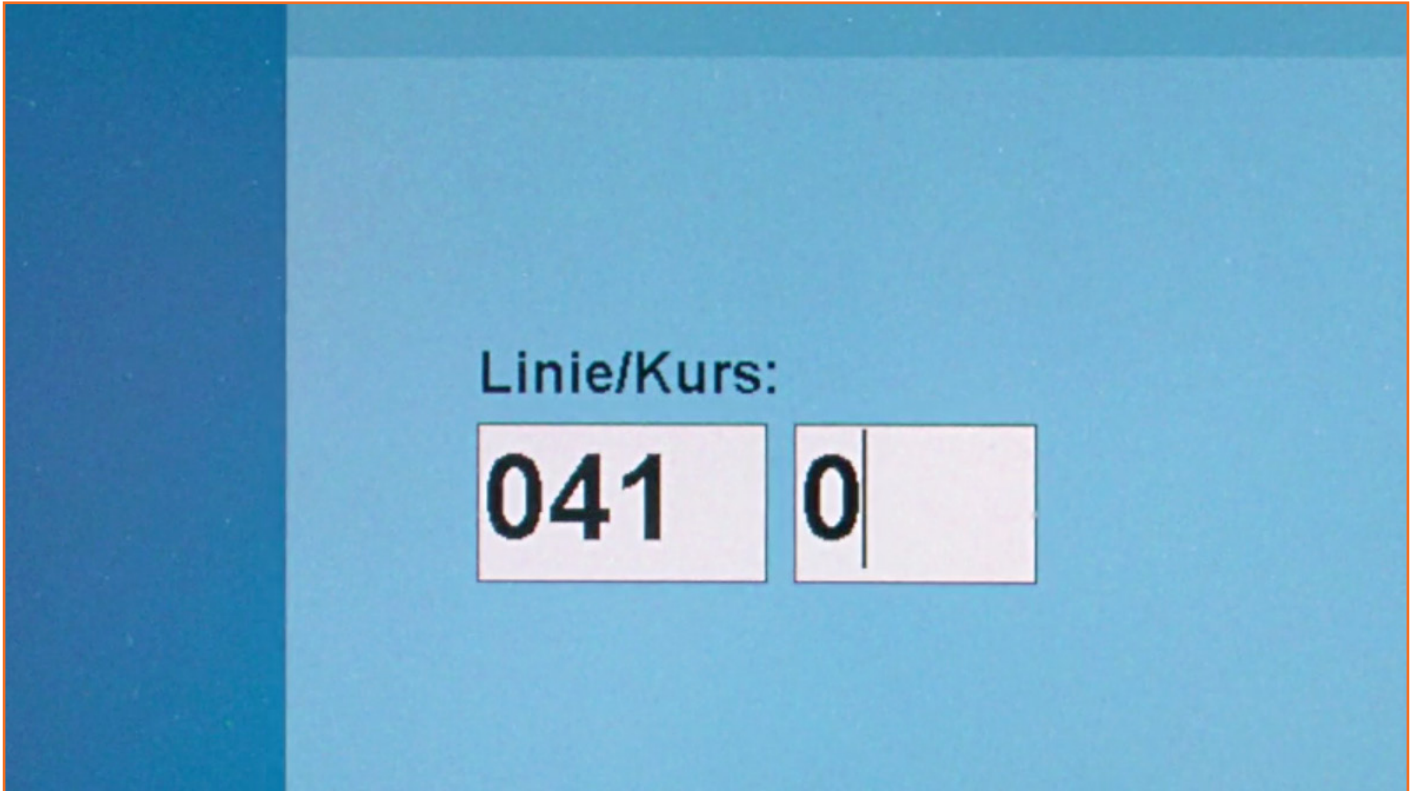
1. Ms. Pötenlütke	2. Christoph	3. Mr. Früh
<p><b>turns the tram on,</b></p> <p><b>enters the line,</b></p> <p><b>extends the electricity collector,</b></p> <p><b>folds out the rear-view mirrors</b></p>	<p><b>runs,</b></p> <p><b>misses the tram,</b></p> <p><b>has to wait</b></p>	<p><b>sits in front of the screen in the control room</b></p>

**Pictures** *Starting the tram* (Die Strassenbahn starten)



Student materials

**Pictures** *Starting the tram* (Die Strassenbahn starten)



Student materials

**Pictures** *Starting the tram (Die Strassenbahn starten)*



Student materials



**Pictures** *Starting the tram (Die Strassenbahn starten)*



Student materials

**Sentence strips** *Starting the tram* (Die Strassenbahn starten)

**Ms. Pötenlücke turns the tram on.**

**This information goes to the on-board  
computer behind the driver's seat.**

**She extends the electricity collector.**

**She enters the line.**

**Sentence strips** *Starting the tram* (Die Strassenbahn starten)

**The on-board computer sends a signal  
to the antenna on top of the tram.**

**The computer in the building  
captures the signal.**

**The signal is transferred to the  
control room, to Mr. Früh.**

**From there the signal continues to  
the large antenna on the building.**

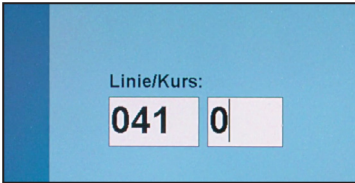
**Worksheet** *The path of the signal (Der Weg des Signals)*



Ms. Pötenlüdke turns the ..... on.



She extends the .....



She enters the .....



This information goes to the ..... behind the driver's seat.



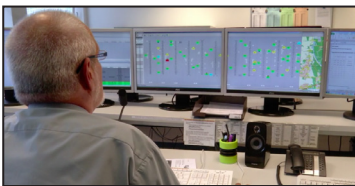
The on-board computer sends a ..... to the antenna on top of the tram.



From there the signal continues to the large ..... on the building.



The ..... in the building captures the signal.



The signal is transferred to the ....., to Mr. Früh.

Antenna, on-board computer, computer, control room, line, signal, tram, electricity collector

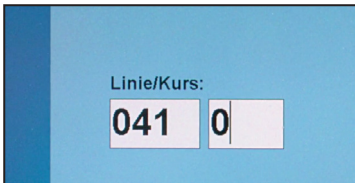
**Worksheet** *The path of the signal (Der Weg des Signals)*



Ms. Pötenlüdke turns the tram on.



She extends the electricity collector.



She enters the line.



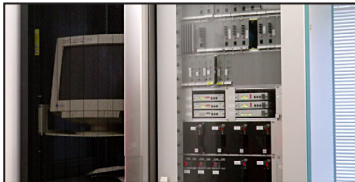
This information goes to the on-board computer behind the driver's seat.



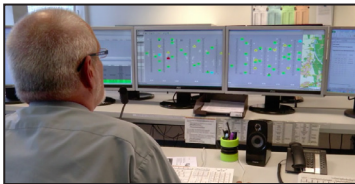
The on-board computer sends a signal to the antenna on top of the tram.



From there the signal continues to the large antenna on the building.



The computer in the building captures the signal.



The signal is transferred to the control room, to Mr. Früh.

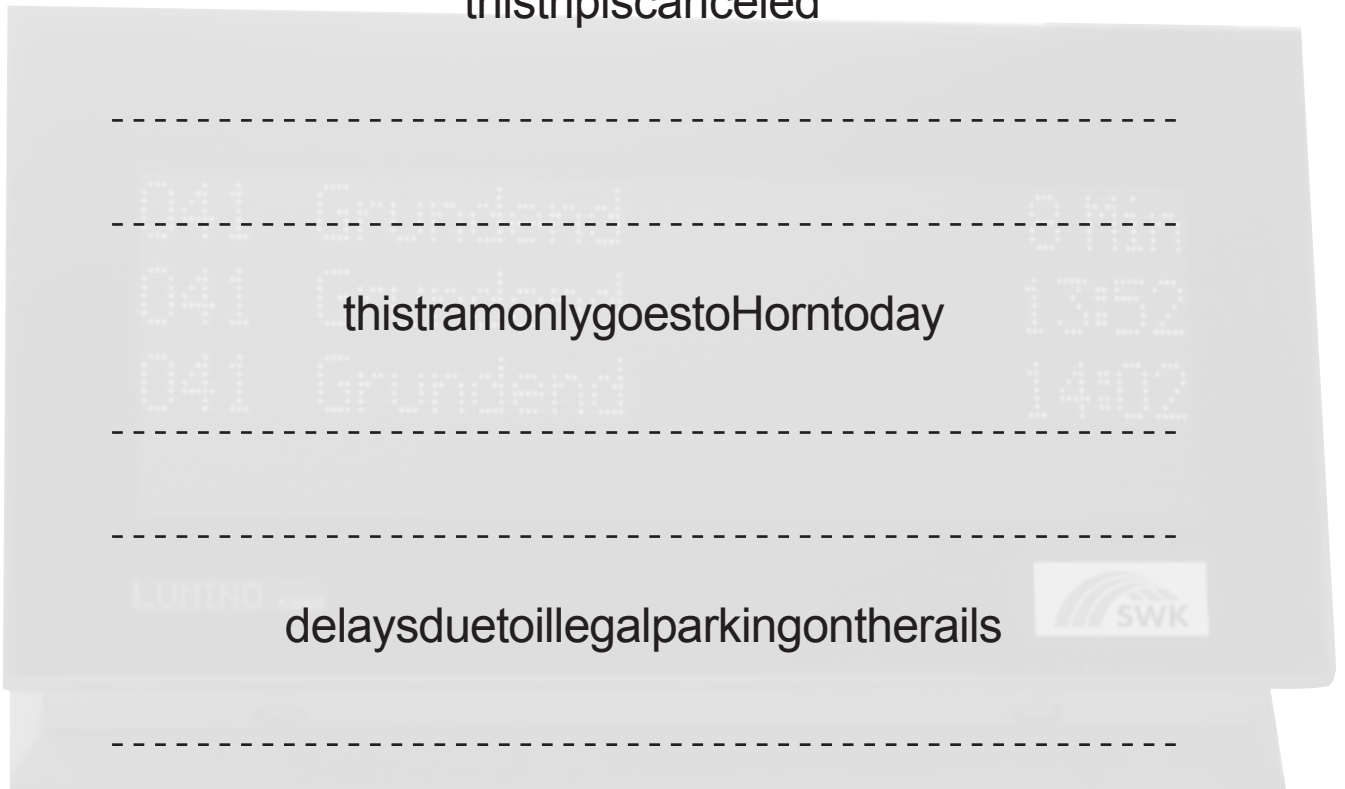
**Worksheet** *Passenger information (Fahrgastinformationen)*

Write the correct passenger information.

delayofapproximately5minutes

-----  
-----

thisstripiscanceled



reroutingduetoconstruction

-----  
-----

**Answer key** *Passenger information* (Fahrgastinformationen)

**Delay of approximately 5 minutes.**

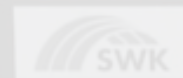
**This trip is canceled.**

041 Grundend 8 Min  
041 Grundend 13:52  
041 Grundend 14:02

**This tram only goes to Horn today.**

**Delays due to illegal parking on the rails.**

LUMINO



**Rerouting due to construction.**

**Worksheet** *Math problems (Rechenaufgaben)*

1. Tram line 15 leaves at 10:20 and needs a total of 35 minutes for its complete route. Before the third stop, though, it has to wait 10 minutes, because a car is parked on the rails. Then it continues, but after the fifth stop, the traffic light at the intersection is red for 3 minutes. It continues and regains 2 minutes at the next station, because no one has to get on or off. Before the final stop it loses 2 minutes again, because a young mother with a stroller gets on. How long does the trip from the starting station to the final station take?

-----  
-----  
-----  
-----

2. Tram line 1 normally needs 25 minutes from the starting station to the train station. Today, though, there is a power outage and it has a 10-minute delay. At first, it has no problems, but there is another power outage and it has to wait, this time only for 3 minutes. At the next traffic light, it loses another 2 minutes. At the train station, so many passengers get on and off that it can't leave for another 3 minutes. How many minutes did it take today from the starting station to the train station?

-----  
-----  
-----  
-----



**Answer key Math problems (Rechenaufgaben)**

1. Tram line 15 leaves at 10:20 and needs a **total of 35 minutes** for its complete route. Before the third stop, though, it has to **wait 10 minutes**, because a car is parked on the rails. Then it continues, but after the fifth stop, the **traffic light** at the intersection is **red for 3 minutes**. It continues and **regains 2 minutes** at the next station, because no one has to get on or off. Before the final stop it **loses 2 minutes** again, because a young mother with a stroller gets on. How long does the trip **from the starting station to the final station** take?

$$35 + 10 + 3 - 2 + 2 = 48 \text{ minutes}$$

2. Tram line 1 normally takes **25 minutes** from the starting station to the train station. Today, though, there is a power outage and it has a 10 minute delay. First it has no problems, but there is another power outage and it has to **wait**, this time only for **3 minutes**. At the next traffic light, it loses another **2 minutes**. At the train station, so many passengers get on and off that it can't leave for another 3 minutes. How many minutes did it take today from the starting station to the train station?

$$25 + 3 + 2 = 30 \text{ minutes}$$

**Word bank** *Station information display (Haltestellenanzeige)*

tram, stop, station information display, to run

to miss the tram, to wait, to turn the tram on,

to enter the line, to extend the electricity collector

to fold out the rear-view mirrors, to sit in front of the screen

control room, information, on-board computer, signal, antenna,

computer, to park illegally, traffic light, to get in, to get out,

passenger, on time, delayed

**My word bank sheet** *Station information display* (Haltestellenanzeige)

Blank rounded rectangular box with a dashed line for writing.

Blank rounded rectangular box with a dashed line for writing.

Blank rounded rectangular box with a dashed line for writing.

Blank rounded rectangular box with a dashed line for writing.

Blank rounded rectangular box with a dashed line for writing.

Blank rounded rectangular box with a dashed line for writing.

Blank rounded rectangular box with a dashed line for writing.

Blank rounded rectangular box with a dashed line for writing.

Blank rounded rectangular box with a dashed line for writing.

Blank rounded rectangular box with a dashed line for writing.

**Now I know (Ich kann schon) questionnaire for the Station Information Display (Haltestellenanzeige) lecture**

Lecture <i>Station information display</i>	How I see myself:		How my teacher sees me:	
	I know this.	I still need to work on this.	You know this.	You still need to work on this.
I can understand a short (technical) film on the topic.				
I know new words and expressions on the topic.				
I can understand new technical terminology in context.				
I can understand and answer simple questions on the topic.				
I can make guesses and test them out.				
I can reconstruct sequences in time.				
I can match sentences to pictures.				
I can form sentences out of words.				
I can understand and answer simple math problems.				
I can correctly spell words on the topic.				
I can understand and follow the teacher's instructions.				