

# SAFETY GUIDELINES FOR EVENTS



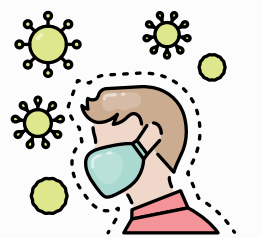
To use scaffolding for working at height and to wear necessary protective equipment for accidents.

Sticking to the walls, hammering and pulling screws of the Auditorium are strictly prohibit.



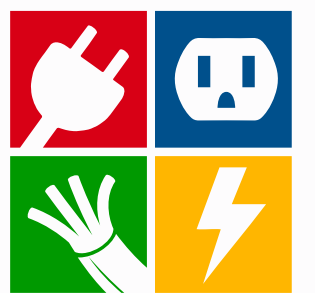
Do not bring or eat food at all.

If you suspect that you are sick, wear a mask.



Emergency exits & exits must not be blocked.

To coordinate with auditorium officials to use electronic devices.



Do not spit in the hall.

Dispose of garbage carefully.



No smoking inside the Auditorium. Do not smoke Electronic Cigarette, Vape.

To cooperate with the arrangements of the people in charge of the Auditorium.



Disregarding the guidelines set by the Goethe-Institut Myanmar and the event venue during event preparation and during the event, leading to delays and potential financial repercussions, I acknowledge that any unintended incidents are the liability of the event organizer.

Signature \_\_\_\_\_

Name of Organizer \_\_\_\_\_

Event Name \_\_\_\_\_

Date \_\_\_\_\_