



JAN - FEB PROGRAM

EVENTS

**Please note that all these events are free of charge unless stated otherwise.
Follow our social media pages to stay updated with the latest information as the details may be subject to change!**

LIVING AND WORKING IN GERMANY

Ask Us Anything

13.01.2026, 1:00PM - 3:00PM, EAT, Online via Zoom

In the process of relocating to Germany? Join our upcoming group consultation, tailored for individuals preparing for vocational training, employment, or settlement in Germany. We will also share practical guidance to help you navigate the transition to the Mein Weg nach Deutschland (My path to Germany) Calendar, a global portal for events on living and working in Germany, offered by the Goethe-Institut. Ask us anything and get answers to guide you through your next steps with ease.

Pre-registration is required: <https://shorturl.at/bj9XO>. You will then receive a ZOOM link before the event commences.

LIVING AND WORKING IN GERMANY

My first Steps in Germany

15.01.2026, 1:00PM - 3:00PM, EAT, Online via Zoom (In French only)

Targeting our Francophone participants in Rwanda and Burundi

Are you moving to Germany soon or have you recently settled there? This session will allow you to discover what awaits you after your arrival:

- Formalities to complete in the first few days: registration office, bank account
- Practical advice: SIM card and internet access, shopping, mobility, accommodation
- Emergency contacts
- Where to find help and information

Pre-registration is required: <https://shorturl.at/bj9XO>. You will then receive a ZOOM link before the event commences.

PANEL

Industry Talks: Event Production, Artist Bookings & Fan Experience

15.01.2026, 6:00 PM, Goethe-Institut, Auditorium

From the backstage to the front row, producing an event is about far more than logistics – it's about crafting unforgettable experiences that connect artists and fans. This session explores the multifaceted world of event production: how to book and manage artists, negotiate with stakeholders, and ensure fans leave with memories that last a lifetime. We'll dive into the strategies behind programming, balancing budgets with creativity, managing expectations, and innovating in an era where audiences crave more immersive and interactive experiences.

LIVING AND WORKING IN GERMANY

Café Deutsch

16.01.2026, 3:00PM - 5:00PM, Kibondeni College

Welcome to Café Deutsch, a dedicated conversational space led by a German native speaker. Participation is open to anyone with B1 level German and above. Each session centers on a themed conversation, with the January session focusing on New Year's Resolutions.

Pre-registration is required: <https://shorturl.at/bj9XO>.

You will then receive a ZOOM link before the event commences.

LIVING AND WORKING IN GERMANY

Job Application Training: Tips and Tricks for Applying Online

21.01.2026, 7:00PM EAT/ 6:00 PM CAT, Online via ZOOM

In this webinar, you'll learn, using various examples, what a first-class application letter should look like. We'll cover the cover letter, the tabular resume, and the complete structure of the application, including attachments. To enable you to apply what you've learned directly when creating your own documents, you'll receive the presentation and further example and practice materials as links afterward.

Pre-registration is required: <https://shorturl.at/bj9XO>.

You will then receive a ZOOM link before the event commences.

This webinar has been organized in cooperation with our Welcome Coaches based in Germany.

SCREENING

4-part Screening of Claude Lanzmann's SHOAH

27., 28., 29., & 30.01.2026, 6:00 PM, Goethe-Institut, Auditorium

Twelve years in the making, Claude Lanzmann's monumental epic on the Holocaust features interviews with survivors, bystanders and perpetrators across 14 countries. The film contains no historical footage. Instead, it uses interviews to "reincarnate" the Jewish tragedy and revisits the sites where the crimes occurred. It stemmed from Lanzmann's concern that the genocide, committed only 40 years earlier, was already fading from memory and that atrocity was being sanitised as history. His monumental work – both epic and intimate, immediate and definitive – is a triumph of form and content, uncovering hidden truths while redefining documentary filmmaking. The film recounts the extermination of six million European Jews during the Second World War and gave the event its name in many countries: the Shoah.

On 30th, the screening will be followed by a conversation.

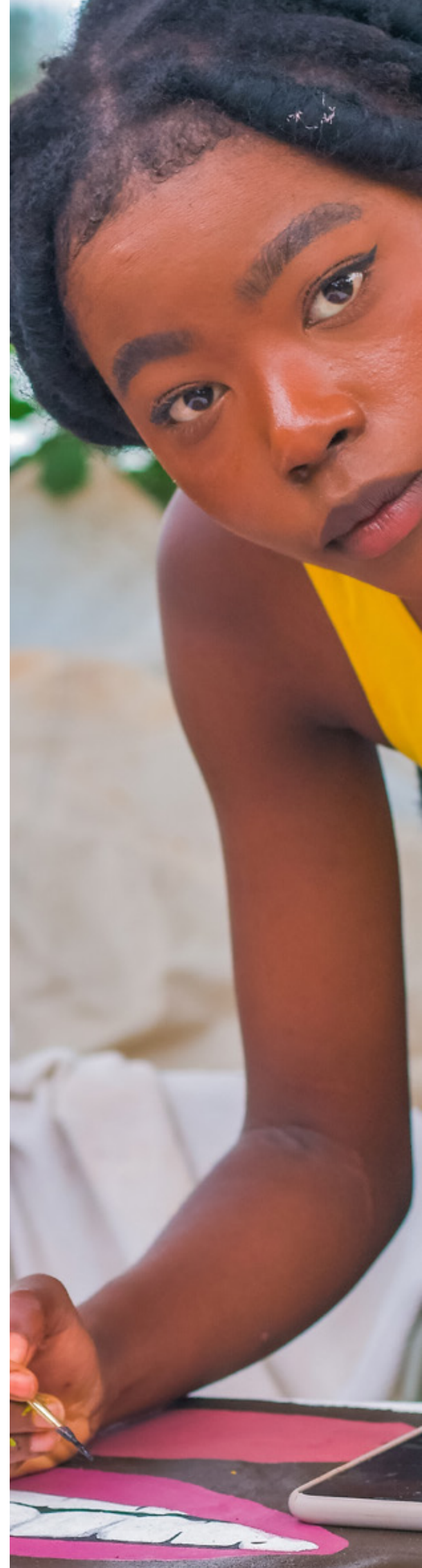
LIVING AND WORKING IN GERMANY

Pathways to Jobs, Training and Recognition in Germany

29.01.2026, 8:00PM EAT/ 7:00PM CAT, Online via ZOOM

In this 90-minute, interactive information session, conducted by the Central Placement Office for International and Specialist Workers of the Federal Employment Agency, you will receive valuable tips and information on the following topics:

- Recognition of academic and professional qualifications
- Job and apprenticeship searches





- Application letters and job interviews
- The social security system in Germany

Pre-registration is required: <https://shorturl.at/bj9XQ>

You will then receive a ZOOM link before the event commences.

This webinar has been organized in cooperation with our Welcome Coaches based in Germany.

POETRY

Poetry Slam Africa Festival

29.01.2026, 6:00PM - 8:00PM, Goethe-Institut, Library

The Poetry Slam Africa festival is a four-day fête curated to be a vibrant learning, networking, and showcasing platform for poetry and related art forms, featuring artists and poets from across the region. This dynamic celebration brings together a diverse community of creatives, fostering connections and sparking dialogues through workshops, masterclasses, panel discussions, and unforgettable performances.

At its heart, the festival celebrates the transformative power of spoken word, highlighting its role in cultural preservation, social commentary, and personal expression. Featuring electrifying poetry slams, collaborative music and poetry concerts, the event offers an immersive experience that amplifies the voices shaping East Africa's creative landscape.

LITERATURE FORUM

Amka

31.01.2026, 10:00AM - 1:00PM, Goethe-Institut, Library

This is a forum for upcoming writers and literary critics to share and discuss stories, poems and current literature trends with the aim of enhancing their creativity.

The forum provides a space to listen to the voices of established and budding writers. Interested participants may send their poems and short stories to amkaforum@gmail.com.

INFORMATION SESSION

How To Improve Your Career Opportunities!

05.02.2026, 8:00PM EAT / 7:00PM CAT, Online via ZOOM

In this webinar, an employee of the employment agency will talk about the following topics:

- What is the current labor market situation in Germany? In which sectors are workers and trainees currently being sought?
- What skills (hard skills and German language skills) do I need to find a job in Germany?
- What does a good resume look like?
- How does the German vocational training system work?
- How can I change jobs or professions if I'm already working in Germany? How can I further my education or improve my German skills? What financial support is available?

The event will be held in German and will be simultaneously translated into Spanish, French, English and Arabic. This webinar has been organized in cooperation with our Welcome Coaches based in Germany.

Register here to attend: <https://shorturl.at/aKkvu>

LIVING AND WORKING IN GERMANY

Ask Us Anything

10.02.2026, 1:00PM - 3:00PM, EAT, Online via ZOOM

In the process of relocating to Germany? Join our upcoming group consultation, tailored for individuals preparing for vocational training, employment, or settlement in Germany. Ask us anything and get answers to guide you through your next steps with ease. Pre-registration is required: <https://shorturl.at/qOME5>

You will then receive a ZOOM link before the event commences.

LIVING AND WORKING IN GERMANY

Café Deutsch

13.02.2026, 4:00PM - 6:00PM, EAT, Kibondeni College

Welcome to our Café Deutsch, a dedicated conversational space led by a German native speaker. Participation is open to anyone with B1 level German and above. Each session centers on a themed conversation, with the February session focusing on Love.

LIVING AND WORKING IN GERMANY

Pathways to Jobs, Training and Recognition in Germany

19.02.2026, 12:30PM EAT / 11:30AM CAT, Online via ZOOM

In this 90-minute, interactive information session, conducted by the Central Placement Office for International and Specialist Workers of the Federal Employment Agency, you will receive valuable tips and information on the following topics:

- Recognition of academic and professional qualifications
- Job and apprenticeship searches
- Application letters and job interviews
- The social security system in Germany

This webinar has been organized in cooperation with our Welcome Coaches based in Germany. Register here to attend: <https://shorturl.at/a6Qxl>

BOOK LAUNCH

Mapenzi Wewe

20.02.2026, 6:00PM - 8:00PM, Goethe-Institut, Library

Mapenzi Wewe is a poetic and emotionally charged love story told through the eyes of a woman entangled in a relationship that shifts everything. Blending lyrical poetry with raw reflection, the book traces the highs and heartbreaks of loving one person deeply only to realize, in the end, that love alone is never enough. Part personal perspective, part intimate conversation, Mapenzi Wewe explores themes of longing, silence, sacrifice, emotional survival, and self-return.

PLAYREADING

Title: (TBC)

20.02.2026, 6:00 PM, Goethe-Institut, Auditorium

We welcome you to the first Playreading of 2026 curated by Esther Kamba, who will create something beautiful to start us off into the year. The title will be communicated in good time on our social media platforms.

FESTIVAL

Kilele Summit – Frequency Shift Project

23.- 28.02.2026, The Mall, Westlands

Kilele brings together artists, collectives and dreamers under our Sound and Solidarity theme for 2026. The gathering will hear from artists, technologists and culture workers from across the board (but particularly those the fringes), people exploring new approaches, fresh takes, and exciting collaborations to envision a better future. The programme will incorporate projects that directly build links between generations, locations, technologies, and collaborative expressions, rooted in care and respect. The summit is driven by ideas and action, not metrics or marketability. Reclaim culture and join us in sound and solidarity at Kilele 26.

VR AND GAMING

For Learners Of German Language

25.02.2026, 2:00PM - 4:00PM, Goethe-Institut, Library

The target group for this month is learners of German as a Foreign language from the beginner to advanced levels. We have a great variety of VR content and games to improve the learning of German as a Foreign language. We aim to enhance their interaction with new technologies and the promotion of knowledge transfer. Send an email to info-nairobi@goethe.de to reserve a spot for this session.



LITERATURE FORUM

Amka

28.02.2026, 10:00AM - 1:00PM, Goethe-Institut, Library

This is a forum for upcoming writers and literary critics to share and discuss stories, poems and current literature trends with the aim of enhancing their creativity. The forum provides a space to listen to the voices of established and budding writers.

AMKA and the Goethe-Institut organize the monthly readings in the library of the Goethe-Institut every last Saturday of the month as well as external venues. Participation in the forum is open to both men and women.

Interested participants may send their poems and short stories to amkaforum@gmail.com.

ANNOUNCEMENTS

T

MEIN WEG NACH DEUTSCHLAND CALENDER

As we kick off the year, we are transitioning our event registrations to the Mein Weg nach Deutschland (My path to Germany) Calendar, a global portal for events on living and working in Germany, offered by the Goethe-Institut. It is available in 15 languages and allows you to filter and select events according to your needs.

What this means for you:

1. A one-time calendar registration via <https://meinwegnachdeutschland.portal.gap.goethe.de/en> will create your user account. The first time you sign up for an event, you'll be asked to provide additional personal details, another one-time process. Thereafter, future event sign-ups will take just one click.
2. Access to Mein Weg nach Deutschland events from across the globe for free.
3. Starting February 2026, this will become our exclusive registration platform for participants in Kenya, Uganda, Rwanda & Burundi. During our 'Ask Us Anything' session on 13th January, we will share practical guidance to help you navigate the transition smoothly.

FEEDBACK SURVEY

To help us gather feedback on our offerings, we are conducting a voluntary survey through this link: <https://forms.office.com/e/3P05qNS3P3>. We would also love to know which stage of the migration process you're currently in, as well as how we can better support you along the way.

AMIF NEWSLETTER - LIVING AND WORKING IN GERMANY

Subscribe to our new newsletter if you wish to stay informed about our upcoming information sessions and events:

<https://www.goethe.de/ins/ke/en/new.html>

WHATSAPP CHANNEL! - LIVING AND WORKING IN GERMANY

Join our Living and Working in Germany WhatsApp channel: <https://whatsapp.com/channel/0029VaaHmn7D8SDqWoAC932p>

We provide information about life in Germany that include topics such as language proficiency, qualifications and certificates, health and school systems and visa processes.

ACCESS OUR LIBRARY RESOURCES

Interact with our physical library offering printed and audio-visual media both in German and English that cover literature, kids' books, German culture, social Sciences, language, art, German geography and photography. Among other resources include our monthly VR sessions, kids' events, and school visits. We encourage you to register to become members: Ksh. 800 per annum.

*Registration is free for our students learning German.

BIBtoGo App

BibToGo App is a user-friendly App for library members of the Goethe-Institut. After downloading the App, customize it by choosing the Goethe-Institut in your country. The initial activation is to be done by Goethe-Institut library staff who will link the App to your personal library account. Afterwards, one can borrow media and extend borrowing periods. Other features include keep track of their currently borrowed media, keep track of fines, access personal details, reserve media borrowed by others and track borrowing history. It is linked to the e-Library service and the online catalogue. In the media recommendation section, one can access pre-defined recommendation lists from the library collection. The library staff can be contacted through the App via E-Mail or Messenger.

ONLEIHE/ eLibrary

Download over 10,000 digital books, magazines, newspapers, music and films onto your computer, tablet or eBook-reader for a limited period via our e-library platform. The service is free of charge. Register for it via our website www.goethe.de/nairobi.



GOETHE - INSTITUT INFORMATION

Online Platforms:

Facebook: Goethe-Institut Nairobi

Instagram: Goetheinstitut_nairobi

Youtube: Goethe-Institut Nairobi

LinkedIn: Goethe-Institut Nairobi

Website: www.goethe.de/kenya

Email

info-nairobi@goethe.de

Telephone:

+254 (0)20 - 221 1479

+254 (0)20 - 221 1381

Physical Address:

Maendeleo House, 3,
Monrovia Street,
Corner Loita Street

Postal Address:

P.O. Box 49468- 00100,
Nairobi, Kenya

General opening hours:

Monday-Friday
8.00 am – 5.00 pm

Please note that all these events are free of charge unless stated otherwise.

Follow our social media pages to stay updated with the latest information as the details may be subject to change!

Liability:

The Goethe-Institut Kenya is not liable for any injury, loss of life or loss/damages to personal property on its premises.

Guests are encouraged to be cautious and conduct themselves appropriately at all times when on Goethe-Institut Kenya's premises. Please also note that our events are public events and that photos will be taken for PR purposes.

Photos: © Goethe-Institut Kenya