

WORK PACKAGE ONE



Funded by the
European Union

Rolling Call:
Deadline: 15 March 2026

CALL FOR PROPOSALS

MOBILITY GRANTS

For Individual Artists and
Culture Professionals

AFRICA-EUROPE PARTNERSHIPS FOR CULTURE

SUB-SAHARAN AFRICA

Implemented by:



Liberté
Créativité
Diversité

INDEX

1. Programme Background.....	1
1.1 About the Sub-Saharan Africa, Create & Connect Component.....	1
1.2 Programme Approach.....	1
1.3 Target Groups.....	1
2. Mobility Grant Scheme Description	
2.1 Purpose and Scope.....	2
2.2 Grant Information.....	2
2.3 Call Timeline.....	2
3. Eligibility Criteria	
3.1 Applicant Eligibility.....	3
3.2 Non-Eligible Applicants.....	3
3.3 Individual Applicants Only.....	4
3.4 Eligible Countries.....	4
4. Eligible Activities.....	5
5. Budget Framework.....	7
5.1 Maximum Grant Amount.....	7
5.2 Eligible Costs.....	7
5.3 Additional Support Available.....	7
5.4 Co-funding and Budget Realism.....	8
6. Award Criteria.....	9
6.1 Artist Quality and Innovation.....	9
6.2 Relevance to Programme Objectives.....	9
6.3 Quality of Preparation.....	9
6.4 Longer-Term Impact.....	9
6.5 Technical Capacity.....	9
6.6 Cross-Cutting Considerations.....	9
7. Applications Process.....	11
7.1 How to Apply.....	11
7.2 Application Requirements.....	11
7.3 What “Confirmation” of Your Mobility Activity Can Include.....	11
7.4 Support Your Application.....	12
7.5 Technical Support.....	12
8. Selection Process.....	13
8.1 Evaluation Stages.....	13
8.2 Selection Committee.....	13
8.3 Evaluation Timeline.....	13
9. Grant Agreement and Implementation	
9.1 Grant Agreement.....	14
9.2 Payment Schedule.....	14
9.3 Reporting Requirements.....	14
9.4 Grant Support.....	14
10 Administrative Information.....	15
10.1 Contact Information.....	15
10.2 Important Notes.....	15
11. Frequently Asked Question.....	16
12. Data Protection.....	17

1. PROGRAMME BACKGROUND



1.1 About the Sub-Saharan Africa, Connect & Create Component

The Sub-Saharan Africa, Connect & Create Component of the Africa-Europe Partnerships for Culture programme is implemented by the Goethe-Institut in partnership with Expertise France and Institut français. This €8 million programme runs for 42 months (2025–2028) and promotes genuine dialogue and cooperation between African and European cultural actors, fostering peer learning exchange, co-creation, and mutual understanding.

1.2 Programme Approach

This component recognises that cultural innovation and professional development strengthen when artists and culture professionals engage across borders. We prioritise peer learning exchange, positioning African practitioners as knowledge creators who shape continental cultural futures. This reflects our commitment to genuine equal-footing partnerships.

1.3 Target Groups

The programme supports African and European artists, culture professionals and cultural operators, with particular attention to emerging practitioners, women, and persons with disabilities.

2. MOBILITY GRANT SCHEME DESCRIPTION

2.1 Purpose and Scope

This mobility scheme primarily supports transcontinental (Africa–Africa) short-term mobility for artists and culture professionals across all sectors.

European artists and organisations may also apply, provided they have an established partnership with an African artist, institution, or organisation.

African artists may also travel to Europe, provided they have an established partnership with a European artist, institution, or organisation.

The scheme aims to:

- Strengthen peer learning and professional networks across Sub-Saharan Africa as well as between Sub-Saharan Africa and Europe
- Enable research, co-creation, and collaborative projects that deepen artistic understanding and practice
- Create opportunities for cultural practitioners to access new markets, audiences, and professional contexts
- Build lasting partnerships that contribute to intra-continental and inter-continental cultural cooperation

2.2 Grant Information

Maximum Grant Amount: €4,000 per mobility

Total Grants available in this round: Approx. 60

Mobility Coverage: Physical mobilities

Geographic Focus: Sub-Saharan Africa -Sub-Saharan Africa (primary); Sub-Saharan Africa-Europe (secondary)

2.3 Call Timeline

Call Opens: January 2026

Call Closes: 15 March 2026, 23:59 CAT

Screening, Evaluation and Notification Period: 16 March – 8 May 2026

Contracting, Payment and Onboarding: 11 May – 5 June 2026

Eligible Mobility Period: Mobilities must begin on or after **1 June 2026**

3. ELIGIBILITY CRITERIA



3.1 Applicant Eligibility

To be eligible, applicants must meet ALL the following criteria:

- **Age:** 18 years or older.
- **Professional Status:** Artist or culture professional linked to artistic disciplines including visual arts, performing arts, music, literature, film, media arts, cultural heritage, design, architecture, fashion design.
- **Geographic Location:** Currently based in Sub-Saharan Africa OR in the European Union.
- **Application Type:** Individual applications only.
- **Destination Connections:** Applicant must demonstrate existing partnerships, collaborations with destination country.
- **Clear Mobility Purpose:** Must demonstrate how the mobility aligns with programme objectives.

3.2 Non-Eligible Applicants

- Applicants under 18 years of age
- Staff or immediate family members of Goethe-Institut, Expertise France, Institut français, or European Commission
- Entities under EU restrictive measures
- Applicants previously excluded from EU-funded projects

3.3 Individual Applications Only

This grant supports **individual professional mobility**. If you are part of an organisation or collective, you must submit your own individual application describing your individual professional development objectives.

Important: Applications from multiple individuals planning related activities will be evaluated independently based on what each individual will gain professionally. If your mobility fundamentally depends on travelling as an ensemble or group (rather than as individuals attending the same event), please explore alternative grants:

WP3 and WP1B Performing Arts grants (managed by Expertise France and Institut français) support ensemble mobility.

Contact eup-ssa@goethe.de for guidance on which grant best suits your needs.

3.4 Eligible Countries

- **Sub-Saharan Africa:** All countries in Sub-Saharan Africa
- **European Union:** All EU Member States

Sub-Saharan African Countries

East Africa: Burundi, Comoros, Djibouti, Eritrea, Ethiopia, Kenya, Madagascar, Malawi, Mauritius, Mozambique, Rwanda, Seychelles, Somalia, South Sudan, Tanzania, Uganda, Zambia, Zimbabwe

West Africa: Benin, Burkina Faso, Cabo Verde, Côte d'Ivoire, Gambia, Ghana, Guinea, Guinea-Bissau, Liberia, Mali, Niger, Nigeria, Senegal, Sierra Leone, Togo

Central Africa: Angola, Cameroon, Central African Republic, Chad, Democratic Republic of Congo, Equatorial Guinea, Gabon, Republic of Congo, São Tomé and Príncipe

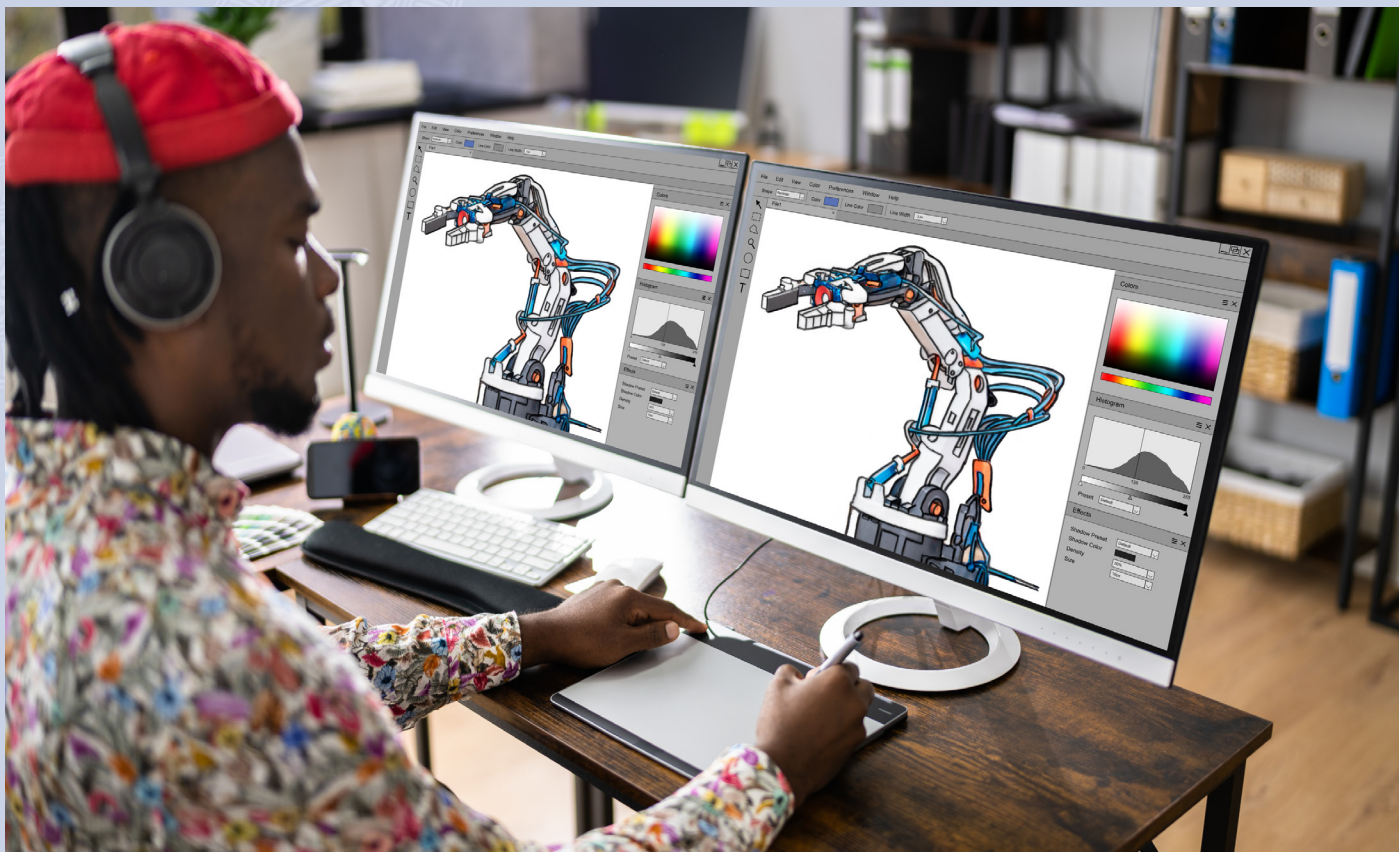
Southern Africa: Botswana, Eswatini, Lesotho, Namibia, South Africa

Note: Countries covered by other components of the Africa-Europe Partnerships for Culture programme are included for coordination purposes but may have specific arrangements.

European Union Member States

Austria, Belgium, Bulgaria, Croatia, Cyprus, Czech Republic, Denmark, Estonia, Finland, France, Germany, Greece, Hungary, Ireland, Italy, Latvia, Lithuania, Luxembourg, Malta, Netherlands, Poland, Portugal, Romania, Slovakia, Slovenia, Spain, Sweden

4. ELIGIBLE ACTIVITIES



Mobility grants support short-term professional exchanges that strengthen artistic understanding and practice as well as professional networks. Eligible activities include:

Artistic and Professional Development

- Research of cultural heritage, ecosystems, and artistic practices informing creative work
- Co-creation or co-development in any artistic discipline with artists from other countries
- Participation in mentorships, residencies, or structured learning programmes
- Development and reinforcement of international professional relationships

Cultural Exchange and Professional Networking

- Invitations to participate in residencies, exhibitions, or significant cultural events
- Attendance or performance at professional conferences, festivals, or international events
- Professional skills development or training



5. BUDGET FRAMEWORK

5.1 Maximum Grant Amount

€4,000 per mobility grant (before additional support)

5.2 Eligible Costs

The grant covers mobility costs structured as follows:

Travel:

- International and domestic airfare, rail, or other transport
- Flights are calculated at a flat rate of €1500 for travel within Sub-Saharan Africa i.e. intracontinental travel and €1000 for travel between Sub-Saharan Africa and Europe i.e. intercontinental travel. All other travel can be specified by the applicant as flat rates do not apply
- Visa and insurance costs (actual costs, refund basis)

Accommodation and subsistence:

- Pre-calculated lump sums for accommodation and per diem for different destinations and cities
- Lump sums vary by geographic location to reflect actual living costs

When you submit your application, the budget template will provide the applicable rates, including the lump sums for your specific destination. These lump sums cover both accommodation and daily subsistence for the duration of your mobility. Different countries and cities have different lump sum amounts to ensure fair and realistic funding across all destinations.

5.3 Additional Support Available

The following additional support is available and can be requested during the application process. Approved additional support is awarded **in addition to** the €4,000 base grant and is **not** counted against this maximum amount:

- **Family Support:** Funding to enable participation for applicants with family responsibilities (e.g., childcare costs).
- **Disability Support:** Funding for additional costs linked to physical disabilities or accessibility needs.
- **Green Mobility:** Support for environmentally sustainable travel options.

Motivate any additional support needs in your application, with clear justification for the costs you are requesting.



5.4 Co-funding and Budget Realism

Your budget should reflect your individual mobility needs. If colleagues are applying for related mobility, ensure your budget justifies your own specific costs. All funding sources must be declared; we review budgets for realistic cost allocation and necessity. Additional funding sources will reduce the total grant amount. So, if you find your grant to be above €4000 (excluding additional support), state your additional funding that will supplement the grant so that you are within the €4000 grant limit. Applications with amounts exceeding €4000 (excluding additional support) will be excluded from evaluation.

Eligibility Window: Your mobility must begin on or after **1 June 2026**. Applications submitted by 15 March 2026 are eligible for mobility from June 2026 onwards until June 2027.

NOTES

6. AWARD CRITERIA

6.1 Artistic Quality and Innovation (25%)

- Artistic quality and relevance to continental or international audiences of performance or training project related to mobility
- Innovation, collaboration, and experimentation with new artistic forms
- Integration of digital approaches where appropriate

6.2 Relevance to Programme Objectives (25%)

- Clear connection to the Sub-Saharan Africa, Connect & Create programme goals (see Introduction, Targets and Goals of Programme).
- Necessity of the mobility to achieve stated professional development objectives
- Potential to contribute to peer learning exchange and mutual understanding between African and European contexts

6.3 Quality of Preparation (20%)

- Thoroughness of mobility planning and timeline
- Quality of partnerships and confirmed connections in destination country
- Realistic budget and well-structured implementation plan

6.4 Longer-Term Impact (20%)

- Potential to open lasting opportunities and strengthen professional networks
- Expected career development outcomes and market access
- **Contribution to cultural ecosystem:** How will the mobility benefit your broader artistic community, local cultural infrastructure, or professional peers through knowledge sharing, collaboration opportunities, or enhanced cultural sector visibility?
- Community engagement and knowledge transfer

6.5 Technical Capacity (10%)

- Demonstrated ability to implement proposed activities
- Track record in relevant artistic or professional field
- Administrative capacity to meet grant requirements

6.6 Cross-Cutting Considerations

Final selection ensures:

- **Geographic Diversity:** Balanced representation across eligible countries. The primary focus lies on Sub-Saharan Africa mobility support.
- **Gender Equality:** Target of 50% female/Non-binary participation
- **Inclusion:** Priority for applicants with disabilities, from socio-economically disadvantaged backgrounds, or based outside major urban centres
- **Career Stage:** Balance between emerging, mid-career, and established professionals
- **Linguistic Diversity:** Representation across different linguistic areas

NOTES

7. APPLICATION PROCESS

7.1 How to Apply

Portal: Applications must be submitted via the Goethe-Application Portal (GAP).

Website: [Login - Kulturfoerderung des Goethe-Instituts](#)

Language: All applications must be submitted in English. Supporting documents in other languages must include English translations (translations do not need to be certified).

If language presents a challenge when filling out your application or preparing requested documents for reporting, please do not hesitate to contact us. We recognise that language barriers can create unnecessary obstacles, and we are happy to support you in finding solutions and providing assistance throughout the process. Please reach out to us on eup-ssa@goethe.de before the application deadlines.

7.2 Application Requirements

Mandatory Documents:

To complete your online application, you will need:

- Portfolio or work samples via upload or online links (ensure that the links will be accessible without requesting permissions)
- CV or professional biography
- Confirmation of your mobility activity (invitation letter, festival registration, research approval, or other official documentation)
- Project timeline/schedule
- Valid passport copy
- Completed budget template (template is available on GAP – please follow instructions carefully to automatically populate the template)

Optional Documents:

- Additional portfolio links
- Letters of support from partners
- Documentation of previous collaborations

7.3 What “Confirmation” of Your Mobility Activity Can Include:

- Festival registration or acceptance
- Approval of a research proposal
- Invitation letter from a host institution or artist
- Any official documentation confirming the activity will take place
- These documents also support your visa applications.



7.4 Supporting Your Application

We recognise applicants face different circumstances—visa constraints, resource asymmetries, institutional access barriers. The jury evaluates applications within these structural realities.

7.5 Technical Support

General Inquiries: eup-ssa@goethe.de

GAP Portal Support: Available via GAP Portal help system

NOTES

8. SELECTION PROCESS



8.1 Evaluation Stages

Stage 1: Eligibility Check

- Administrative compliance and completeness review
- Eligibility criteria verification

Stage 2: Technical Evaluation

- Assessment against award criteria (including ecosystem contribution)
- Budget review for cost-effectiveness and necessity
- Risk assessment

Stage 3: Selection Committee Review

- External expert jury evaluation
- Geographic and demographic balance review
- Final selection and ranking

8.2 Selection Committee

The jury comprises:

- Cultural sector experts from Africa and Europe
- Representatives of relevant cultural networks
- Independent external evaluators

Committee composition ensures gender balance, geographic representation, sectoral expertise, and linguistic diversity.

8.3 Evaluation Timeline

- Applications close: 15 March 2026
- Evaluation period: 16 March - 4 May 2026
- Results notification: From 4 May 2026
- Contracting, payment and programme orientation: 11 May – 5 June 2026
- Mobility implementation: 1 June 2026

9. GRANT AGREEMENT AND IMPLEMENTATION

9.1 Grant Agreement

Successful applicants sign a grant agreement specifying:

- Grant amount and payment schedule
- Project implementation requirements
- Reporting and monitoring obligations
- Visibility and communication requirements

9.2 Payment Schedule

- **1st Payment (80%):** Upon grant agreement signature and submission of correctly completed payment request form.
- **2nd Payment (20%):** Upon completion of mobility and submission of all final reports and payment request form.

All payments subject to satisfactory progress and compliance with grant terms.

9.3 Reporting Requirements

Kick-off video: Submit a short video on day 1 of your mobility.

On-Mobility Report: Submit a progress report at a point during your mobility that makes sense for your schedule.

Post-Mobility Report: Submit your completed comprehensive final report and all financial documentation.

9.4 Grantee Support

- Mandatory orientation workshop for successful applicants
- Regular check-ins via GAP Portal
- Technical assistance throughout implementation
- Networking opportunities with other grantees

10. ADMINISTRATIVE INFORMATION



10.1 Contact Information

Programme Management:

Goethe-Institut Johannesburg
119 Jan Smuts Avenue
Johannesburg, 2194
Gauteng, South Africa

Support:

For general inquiries: eup-ssa@goethe.de

Technical Assistance:

For all GAP related enquiries:
support.gap@goethe.de

Legal Framework

Governing Law: German law and EU regulations

Data Protection: GDPR compliance mandatory

Language: English version legally binding

10.2 Important Notes

- Applications submitted after **15 March 2026** will **not** be considered
- All application related queries must be sent by **8 March 2026**. No application related queries will be attended to after this date. Please ensure you interact with the application in time. You will be able to complete and save the application on GAP to come back to later.
- Incomplete applications will be rejected
- False information may lead to exclusion and grant recovery

11. FREQUENTLY ASKED QUESTIONS

Q: Can colleagues or collaborators from my organisation each apply for mobility to the same event?

A: Yes. Each application is evaluated independently based on what that individual will gain professionally. However, if your mobility fundamentally requires travelling as an ensemble or group, rather than as individuals who happen to be attending the same event, explore the performing arts and ensemble mobility grants available through other components of the programme (WP3 and WP1B Performing Arts grants managed by Expertise France and Institut français).

Q: What if my mobility dates are close to the eligibility window?

A: Your mobility must begin on or after 1 June 2026. If an opportunity occurs before this date, apply in a future call cycle.

Q: How does the jury view applications from people working on related projects?

A: Each application is evaluated on its individual merits. The jury assesses what each applicant will gain professionally from their mobility, not group benefits. Realistic budget justification for individual costs is important when applications are linked.

Q: Is language support available if I struggle with English?

A: If language presents a challenge when filling out your application or preparing requested documents, please contact us at eup-ssa@goethe.de. We are happy to provide support and find solutions.

Q: Can I apply if I don't have a formal invitation letter?

A: An invitation letter is not the only acceptable confirmation. Festival registration, research approval, or any official documentation confirming the activity will take place is acceptable. These documents also support your visa applications.

Q: What happens if I need additional support for family responsibilities or disabilities?

A: You can request Family Support, Disability Support, or Green Mobility during the application process. These are awarded in addition to the €4,000 base grant. Please provide clear justification for your request in the budget.

For additional questions, please contact eup-ssa@goethe.de.

12. DATA PROTECTION

Applications and all supporting documents will be processed in accordance with GDPR requirements. Personal data will be used solely for the purpose of administering this call and selecting grantees. Applicants have the right to access, correct, and delete their personal data. For more information, please consult our Data Protection Declaration available at [link] or contact eup-ssa@goethe.de.

This Call for Proposals is published under the Africa-Europe Partnerships for Culture programme, funded by the European Union and implemented by the Goethe-Institut in partnership with Expertise France and Institut français.



www.goethe.de/aepe

