

WORK PACKAGE FOUR
LOT 1



Funded by the
European Union

Deadline: 17 April 2026

CALL FOR PROPOSAL

**VISUAL ARTS: ARTISTIC COLLABORATION
AND DISSEMINATION**

AFRICA-EUROPE PARTNERSHIPS FOR CULTURE

SUB-SAHARAN AFRICA

Implemented by:



**GOETHE
INSTITUT**

E EXPERTISE
FRANCE
GROUPE AFD

**INSTITUT
FRANÇAIS**

*Liberté
Créativité
Diversité*

INDEX

1. Programme Background.....	1
1.1 About the Sub-Saharan Africa, Connect & Create Component.....	1
1.2 Programme Approach.....	1
1.3 Work Package 4, Lot 1: Artistic Collaboration and Dissemination....	1
1.4 Target Groups.....	1
2. What the call funds.....	2
2.1 The core offer.....	2
2.2 What success looks like.....	2
3. Eligibility.....	3
3.1 Who can apply.....	3
3.2 Who cannot apply.....	3
3.3 Eligible locations.....	3
4. Eligible Costs.....	6
4.1 Eligible cost categories.....	6
4.2 Budget requirements.....	7
5. How you will be evaluated.....	8
6. Application Process.....	9
6.1 What to submit.....	9
6.2 Language.....	10
7. Timelines & Selection Process.....	12
7.1 How we select.....	12
8. How to support your project.....	13
9. Contact and support.....	13
10. Key deadlines and rules.....	13
11. Legal information.....	14
12. Frequently asked questions.....	15

1. PROGRAMME BACKGROUND



1.1 About the Sub-Saharan Africa, Connect & Create Component

The Sub-Saharan Africa, Connect & Create Component of the Africa-Europe Partnerships for Culture programme is implemented by the Goethe-Institut in partnership with Expertise France and Institut français. This €8 million programme runs for 42 months (2025–2028) and promotes genuine dialogue and cooperation between African and European cultural actors, fostering peer learning exchange, co-creation and mutual understanding.

1.2 Programme Approach

This component recognises that cultural innovation and professional development strengthen when visual artists and culture professionals engage across borders. We prioritise peer learning exchange, positioning African practitioners as knowledge creators who shape continental cultural futures. This reflects our commitment to genuine equal-footing partnerships.

We acknowledge that operating within European Union funding structures creates ongoing tensions between partnership rhetoric and institutional realities. We commit to honest engagement with these dynamics and to prioritising the voices, agency and knowledge of Sub-Saharan African visual arts practitioners throughout programme implementation.

1.3 Work Package 4, Lot 1: Artistic Collaboration and Dissemination

This call supports teams undertaking collaborative visual arts projects that produce publicly presented work. We fund the full artistic journey: from collaborative concept development through production to public presentation and audience engagement.

This is NOT a residency call, NOT a research call, and NOT an arts administration programme. We fund teams creating finished artistic work together across continents.

1.4 Target Groups

This grant supports team-based collaborative projects by visual artists and cultural professionals, with particular attention to emerging practitioners, women, non-binary persons and persons with disabilities.

2. WHAT THIS CALL FUNDS

2.1 The Core Offer

Up to €20,000 per team to support the creation and public presentation of collaborative visual arts work produced jointly by Sub-Saharan African and European practitioners.

Project Duration: 12 months (July 2026 – July 2027)

What We Fund: Everything required to develop an artistic concept collaboratively, produce the work, and present it to audiences. This includes **artist fees, production materials, travel for creative collaboration, exhibition costs, and audience engagement activities.**

What We Don't Fund: Standalone research or documentation projects. Residencies focused primarily on experimentation without a finished artwork. Capacity-building or training programmes. Market research or feasibility studies.

2.2 Success Looks Like This

By the end of 12 months, your team will have:

- Developed an artistic concept together
- Produced a finished artistic work (painting, sculpture, video, installation, photography series, digital art, publication-as-art-object, performance documentation, etc.)
- Presented that work to an audience (physically or digitally)
- Engaged audiences meaningfully with the work
- Built professional relationships that extend beyond the project



3. ELIGIBILITY

3.1 Who Can Apply

Teams only. Minimum 2 members; no maximum, however number of team members must make sense given the budget allocation.

All team members must:

- Be 18 years or older
- Be visual artists or professionals in visual arts disciplines:
- Visual artists
- Curators
- Exhibition designers
- Art directors
- Digital media artists
- Cultural managers with visual arts experience
- Other visual arts professionals
- Be currently based in Sub-Saharan Africa or the European Union
- Commit to equitable, dialogue-based decision-making on the project

Team lead (primary applicant):

Must be based in Sub-Saharan Africa

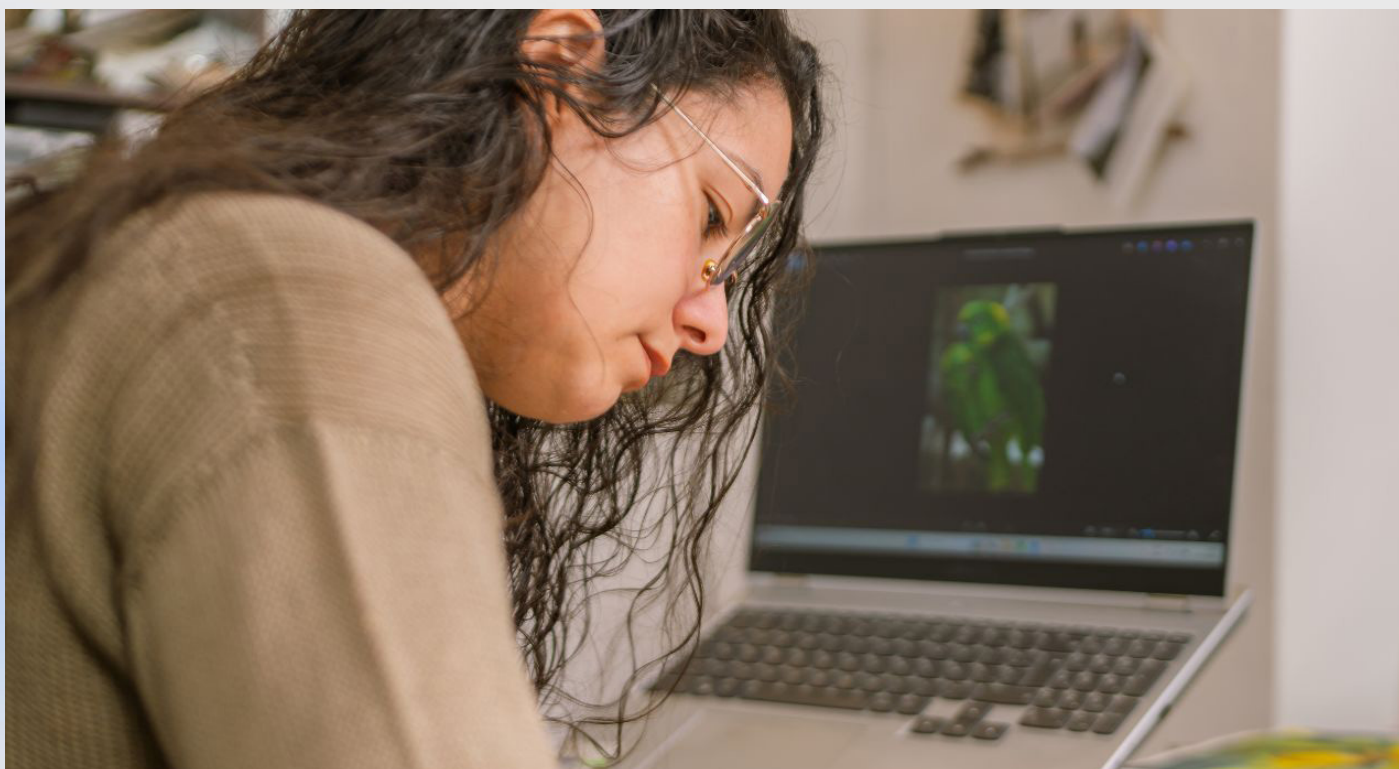
Geographic composition:

- All team members must be based in Sub-Saharan Africa, OR
- Team includes members from both Sub-Saharan Africa AND Europe
- Teams from a single country are eligible if all members are SSA-based

3.2 Who Cannot Apply

Applications will be rejected if:

- Any team member is under 18
- Any team member is staff or family of Goethe-Institut, Expertise France, Institut français, or EU Commission
- Any team member is under EU restrictive measures
- Any team member has been excluded from previous EU-funded projects
- Team members are based outside Sub-Saharan Africa or EU (except team lead provision above)
- Team lead cannot evidence SSA location or substantial professional engagement



3.3 Eligible Locations

- **Sub-Saharan Africa:** All countries in Sub-Saharan Africa
- **European Union:** All EU Member States

Sub-Saharan African Countries

East Africa: Burundi, Comoros, Djibouti, Eritrea, Ethiopia, Kenya, Madagascar, Malawi, Mauritius, Mozambique, Rwanda, Seychelles, Somalia, South Sudan, Tanzania, Uganda, Zambia, Zimbabwe

West Africa: Benin, Burkina Faso, Cabo Verde, Côte d'Ivoire, Gambia, Ghana, Guinea, Guinea-Bissau, Liberia, Mali, Niger, Nigeria, Senegal, Sierra Leone, Togo

Central Africa: Angola, Cameroon, Central African Republic, Chad, Democratic Republic of Congo, Equatorial Guinea, Gabon, Republic of Congo, São Tomé and Príncipe

Southern Africa: Botswana, Eswatini, Lesotho, Namibia, South Africa

Note: Countries covered by other components of the Africa-Europe Partnerships for Culture programme are included for coordination purposes but may have specific arrangements.

European Union Member States

Austria, Belgium, Bulgaria, Croatia, Cyprus, Czech Republic, Denmark, Estonia, Finland, France, Germany, Greece, Hungary, Ireland, Italy, Latvia, Lithuania, Luxembourg, Malta, Netherlands, Poland, Portugal, Romania, Slovakia, Slovenia, Spain, Sweden

4. ELIGIBILITY COSTS

Budget ceiling: €20,000 per team over 12 months.

All costs must be necessary, proportionate and justified. Your budget narrative must explain why each line item is needed and what it supports.

4.1 Eligible Cost Categories

Artist and Professional Fees

- Team member fees and stipends (realistic compensation for artistic work and project management)
- Specialist consultant fees (exhibition designer, sound engineer, technical specialist, etc.)
- Administrative and project management support
- Curatorial fees

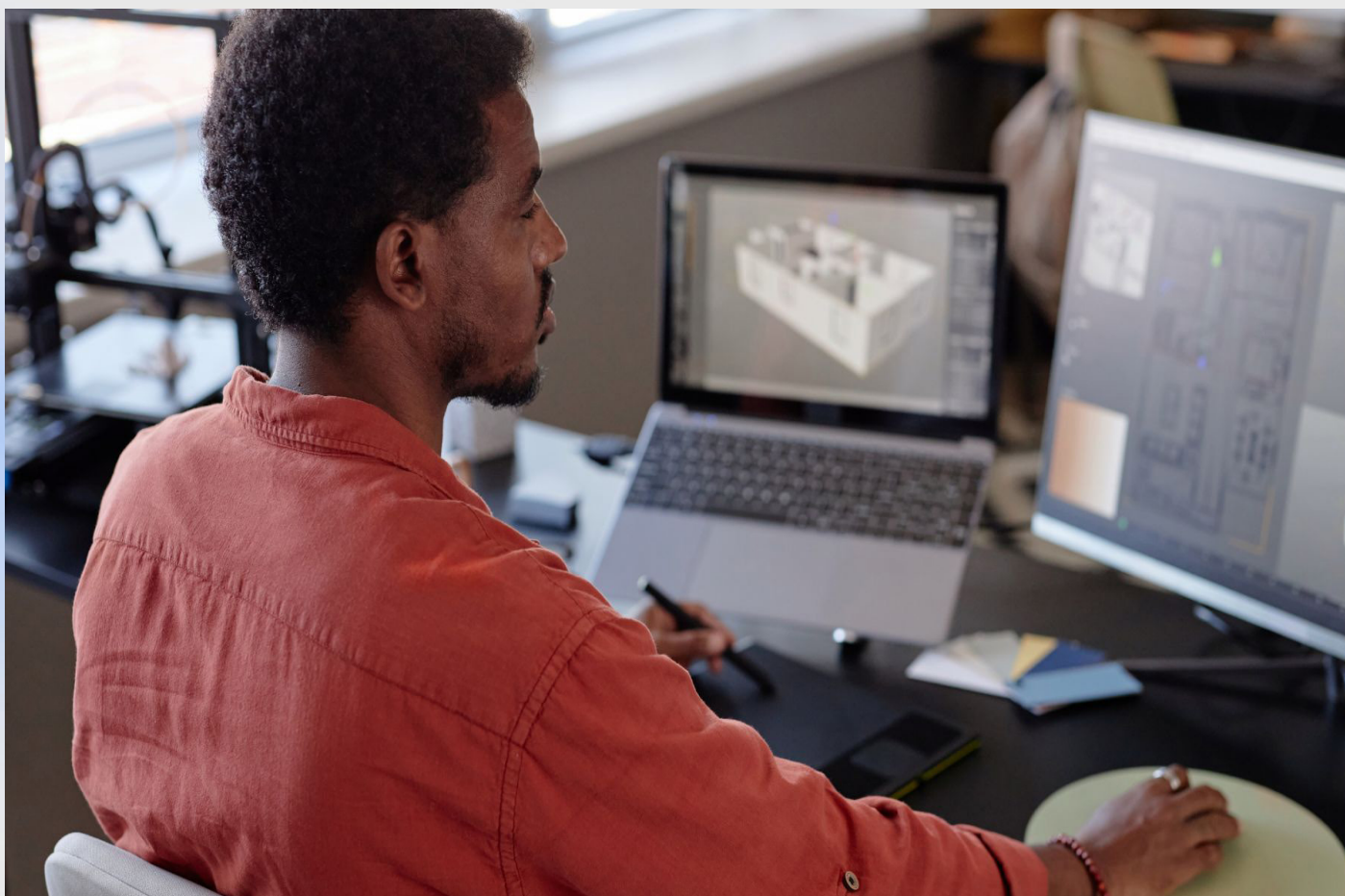
Production and Materials

- Materials and supplies for artistic production
- Equipment rental or purchase
- Studio and workspace rental
- Technical equipment and software
- Manufacturing, fabrication, printing
- Consumables

Travel and Accommodation*

- International and domestic travel for creative collaboration
- Accommodation during production phases and collaborative meetings
- Ground transport and logistics
- Equipment transportation
- Visa and travel insurance

***Please note that flights and accommodation are given lump sums based on the country or countries one will be travelling to**



Exhibition and Dissemination

- Exhibition or installation setup, venue fees
- Photography and videography of artwork
- Printing of exhibition materials, catalogues, artists' publications
- Website and digital platform development
- Marketing and promotion
- Public opening events, artist talks, public programmes
- Event organisation and management

Professional Networking

- Participation in art fairs, gallery connections, professional networks
- Market access activities (connecting to galleries, fairs, institutions, curators)

4.2 Budget Requirements

- Use the GAP budget template provided—do not use your own
- All costs must be in EUR
- Lump sums are applicable for flight and accommodation
- Cost estimates should reflect realistic market rates for your region
- All budget lines must be justified in narrative form

5. EVALUATION CRITERION

Equitable Partnership (30%)

The artistic concept was shaped through contributions from across the team's varied backgrounds. Decision-making is genuinely shared. Each team contributed distinctly to artistic direction. You describe how both parties will lead creatively. Power dynamics are acknowledged and addressed.

Artistic Quality and Innovation (25%)

The artistic work has merit. Does collaboration produce originality or innovation? Quality and relevance of your artistic approach. Meaningful integration of digital approaches where appropriate.

Dissemination and Audience Engagement (20%)

You have specific, realistic pathways to public presentation. Named venues or documented conversations with venues (not vague). Clear articulation of target audiences. How will audiences discover and engage with your work?

Project Design and Feasibility (15%)

Your timeline is realistic for 12 months. Budget is proportionate to activities. Your team has capacity to execute. You've considered production constraints.

Longer-Term Impact (10%)

Potential for lasting professional relationships beyond the project. Career and market access opportunities for team members. Contribution to continental visual arts ecosystem.

Cross-Cutting Balance:

Selection ensures geographic diversity across Sub-Saharan Africa and Europe, gender balance (50% female/non-binary target), inclusion of practitioners with disabilities and those from disadvantaged backgrounds, linguistic diversity, sectoral diversity, and career-stage balance.

6. APPLICATION PROCESS



6.1 What to Submit

In the GAP portal, you will provide:

1. Team Information

- Names, locations, professional roles of all team members
- CV or professional biography for each team member (max 2 pages per person)
- Evidence of prior collaboration OR explanation of complementary expertise
- Confirmation of each member's current location

2. Your Artistic Concept (max 600 words)

- What will you create? (painting, sculpture, video, installation, etc.)
- What is the artistic vision or inquiry?
- How will both African and European teams contribute creatively?
- What is collaborative about this project?

3. Your Partnership Approach (max 400 words)

How will decisions be made together?

What is each team member's creative role?

How will you address conflicting artistic perspectives?

What evidence of equitable partnership can you provide?

4. Your Dissemination Plan (max 500 words)

- Where will the work be shown? (Specific venues/platforms or documented conversations with venues/platforms)
- When and for how long?
- Who is your target audience?
- How will audiences access the work? (Opening hours, digital access, etc.)
- What engagement activities will you offer? (Artist talks, public programmes, etc.)

5. Your Timeline (realistic monthly milestones)

- Month 1-2: Concept development and planning
- Month 3-4: Pre-production and team meetings
- Month 5-9: Production
- Month 10-11: Exhibition preparation and finalisation
- Month 12: Exhibition, audience engagement, documentation

6. Budget (using GAP template)

- All costs in EUR
- Line-by-line justification for each category
- Explanation of cost reasonableness

7. Supporting Documents

- Evidence of partnerships (venue confirmation letters, gallery interest, etc.)
- Work samples or portfolio links (optional but recommended)
- Passport scans for all team members (not required at application, may be requested at contracting)

6.2 Language

Applications must be submitted in English. If your team's primary working language is not English, you may submit in your original language with an English translation, but both count toward word limits.

Language support: If language is a barrier, contact eup-ssa@goethe.de before 24 March 2026. We provide support.



7. TIMELINE & SELECTION PROCESS

7.1 Important Dates

Applications open: 6 March 2026

Last day for enquiries: 10 April 2026

Application deadline: 17 April 2026 23:59 CAT

Results announcement: From 8 June 2026

Contracting and onboarding: From 15 June 2026

Grant agreements signed: June 2026

Your project begins: 1 July 2026

Your project ends: 31 July 2027

7.2 How we Select

Step 1: We check that your team meets eligibility requirements and that your application is complete.

Step 2: A jury of visual arts professionals from Sub-Saharan Africa and Europe reviews all eligible applications using the rubric in Section 5. They assess artistic merit, partnership quality, feasibility and dissemination plan.

Step 3: Jury recommends grants, ensuring geographic, gender and sectoral diversity across all awardees.

Step 4: We notify you of results and invite successful teams to a mandatory orientation in June before project launch.

8. SUPPORT DURING YOUR PROJECT

Selected teams participate in:

- Peer learning workshops with other awardees
- Mentorship from visual arts professionals in Sub-Saharan Africa and Europe
- Critical dialogue forums exploring visual arts sector contexts
- Professional development on collaborative practice, market access, and international partnerships

9. CONTACT & SUPPORT

General Inquiries: eup-ssa@goethe.de

Technical (GAP portal): support.gap@goethe.de

Queries must be submitted by **24 March 2026** to receive responses.

Goethe-Institut Johannesburg

119 Jan Smuts Avenue, Corner Newport Road

Parkwood 2193, Johannesburg, South Africa

10. KEY DEADLINES & RULES

- Application deadline is hard: 7 April 2026, 23:59 CAT. No late submissions accepted.
- Incomplete applications will be rejected. Ensure all mandatory sections are completed.
- False information may lead to exclusion and grant recovery.
- You can save your application on GAP and return to it before the deadline.

11. LEGAL INFORMATION

Governing Law: German law and EU regulations

Data Protection: GDPR applies. Personal data used only for this call and grant selection. You have rights to access, correct and delete your data (subject to legal retention).

Language: English version is legally binding.

Funding: This call is issued under the Multi-Partner Contribution Agreement between Goethe-Institut e.V. and the European Commission. Grants subject to EU Financial Support to Third Parties regulations and Goethe-Institut procurement policies.

12. FREQUENTLY ASKED QUESTIONS - LOT 1

Q: My team is all from one country. Can we still apply?

A: Yes, teams from one country can apply.

Q: Can I apply if I'm the only artist and I'm working with a curator/designer from another continent?

A: Yes. Teams must have at least 2 members with balanced roles. If you're an artist and your co-applicant is a curator, that's a valid team.

Q: How much should I budget for artist fees?

A: Budget what is realistic for your role and contribution. If you'll spend 6 months on this project as lead artist, your fee should reflect that. All fees must be justified and reasonable relative to professional rates in your region.

Q: We don't have a confirmed venue yet. Can we still apply?

A: Yes, but you should have documented evidence of serious interest. An invitation letter from a gallery, museum or festival is stronger than "we plan to contact venues." If partnerships are still developing, explain the status and what you've done to advance them.

Q: What if our exhibition gets cancelled during the project?

A: Contact us immediately. We understand circumstances change. Discuss with your programme officer how to proceed.

Q: Is there a maximum team size?

A: No maximum. Larger teams are fine if roles are clear, costs are within maximum amount and budget is justified.

Q: Can we apply if we're a newly formed team with no prior collaboration?

A: Yes. Explain your complementary expertise and how decision-making will work. We value new collaborations.

Q: We want to apply but we're worried about language barriers in the application.

A: Contact eup-ssa@goethe.de before 24 March 2026. We provide language support.

